

A14208

Leader in Biomolecular Solutions for Life Science



WDR33 Rabbit pAb

Catalog No.: A14208

Basic Information

Observed MW

145kDa

Calculated MW

30kDa/38kDa/145kDa

Category

Polyclonal Antibody

Applications

WB, ELISA

Cross-Reactivity

Human, Rat

Background

Predicted to be involved in mRNA polyadenylation. Predicted to act upstream of or within mRNA processing. Located in nucleus. Orthologous to human WDR33 (WD repeat domain 33).

Recommended Dilutions

WB 1:500 - 1:2000

Immunogen Information

Gene ID

74320

Swiss Prot**Immunogen**

Recombinant fusion protein containing a sequence corresponding to amino acids 1-208 of mouse WDR33 (NP_001164437.1).

Synonyms

WDC146; 1110001N06Rik; 2310011G05Rik; 2810021O11Rik; 8430413N20Rik; WDR33

Contact



www.abclonal.com

Product Information

Source

Rabbit

Isotype

IgG

Purification

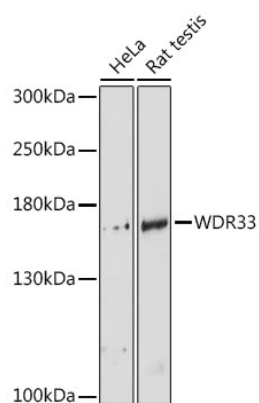
Affinity purification

Storage

Store at -20°C. Avoid freeze / thaw cycles.

Buffer: PBS with 0.01% thimerosal, 50% glycerol, pH 7.3.

Validation Data



Western blot analysis of various lysates using WDR33 Rabbit pAb (A14208) at 1:3000 dilution.
Secondary antibody: HRP Goat Anti-Rabbit IgG (H+L) (AS014) at 1:10000 dilution.
Lysates/proteins: 25µg per lane.
Blocking buffer: 3% nonfat dry milk in TBST.
Detection: ECL Basic Kit (RM00020).
Exposure time: 90s.