

A14193

Leader in Biomolecular Solutions for Life Science



## Vinculin Rabbit pAb

Catalog No.: A14193

7 Publications

### Basic Information

#### Observed MW

124kDa

#### Calculated MW

124kDa

#### Category

Mouse Monoclonal Antibody

#### Applications

WB,IF/ICC,ELISA

#### Cross-Reactivity

Human,Mouse,Rat

### Background

Vinculin is a cytoskeletal protein associated with cell-cell and cell-matrix junctions, where it is thought to function as one of several interacting proteins involved in anchoring F-actin to the membrane. Defects in VCL are the cause of cardiomyopathy dilated type 1W. Dilated cardiomyopathy is a disorder characterized by ventricular dilation and impaired systolic function, resulting in congestive heart failure and arrhythmia. Multiple alternatively spliced transcript variants have been found for this gene, but the biological validity of some variants has not been determined.

### Recommended Dilutions

WB	1:500 - 1:1000
IF/ICC	1:50 - 1:200

### Immunogen Information

#### Gene ID

7414

#### Swiss Prot

P18206

#### Immunogen

Recombinant fusion protein containing a sequence corresponding to amino acids 751-850 of human Vinculin (NP\_054706.1).

#### Synonyms

MV; MVCL; CMD1W; CMH15; HEL114; Vinculin

### Contact



[www.abclonal.com](http://www.abclonal.com)

### Product Information

#### Source

Rabbit

#### Isotype

IgG

#### Purification

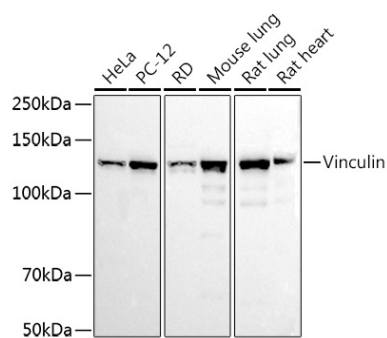
Affinity purification

#### Storage

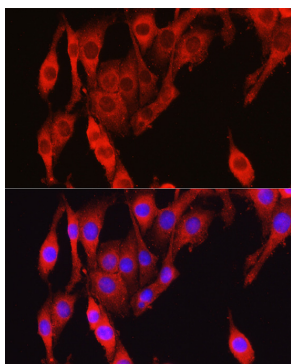
Store at -20°C. Avoid freeze / thaw cycles.

Buffer: PBS with 0.05% proclin300,50% glycerol,pH7.3.

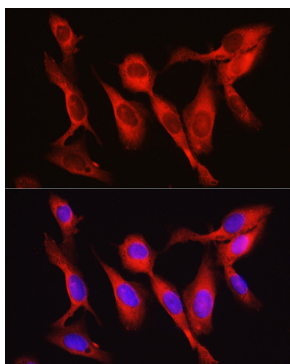
## Validation Data



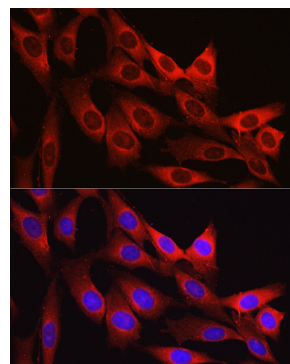
Western blot analysis of extracts of various cell lines, using Vinculin antibody (A14193) at 1:1000 dilution.  
Secondary antibody: HRP Goat Anti-Rabbit IgG (H+L) (AS014) at 1:10000 dilution.  
Lysates/proteins: 25µg per lane.  
Blocking buffer: 3% nonfat dry milk in TBST.  
Detection: ECL Basic Kit (RM00020).  
Exposure time: 10s.



Immunofluorescence analysis of PC-12 cells using Vinculin antibody (A14193) at dilution of 1:150. Blue: DAPI for nuclear staining.



Immunofluorescence analysis of U2OS cells using Vinculin antibody (A14193) at dilution of 1:150. Blue: DAPI for nuclear staining.



Immunofluorescence analysis of NIH/3T3 cells using Vinculin antibody (A14193) at dilution of 1:150. Blue: DAPI for nuclear staining.