

A14112

Leader in Biomolecular Solutions for Life Science



ATG4B Rabbit pAb

Catalog No.: A14112

Basic Information

Observed MW

44kDa

Calculated MW

44kDa

Category

Mouse Monoclonal Antibody

Applications

WB, ELISA

Cross-Reactivity

Human, Rat

Background

Autophagy is the process by which endogenous proteins and damaged organelles are destroyed intracellularly. Autophagy is postulated to be essential for cell homeostasis and cell remodeling during differentiation, metamorphosis, non-apoptotic cell death, and aging. Reduced levels of autophagy have been described in some malignant tumors, and a role for autophagy in controlling the unregulated cell growth linked to cancer has been proposed. This gene encodes a member of the autophagin protein family. The encoded protein is also designated as a member of the C-54 family of cysteine proteases. Alternate transcriptional splice variants, encoding different isoforms, have been characterized.

Recommended Dilutions

WB 1:500 - 1:2000

Immunogen Information

Gene ID

23192

Swiss Prot

Q9Y4P1

Immunogen

Recombinant fusion protein containing a sequence corresponding to amino acids 1-393 of human ATG4B (NP_037457.3).

Synonyms

APG4B; AUTL1; HsAPG4B; ATG4B

Contact



www.abclonal.com

Product Information

Source

Rabbit

Isotype

IgG

Purification

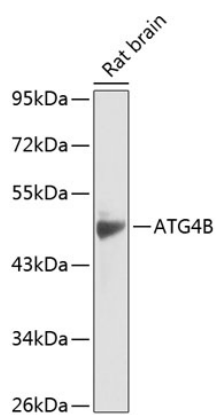
Affinity purification

Storage

Store at -20°C. Avoid freeze / thaw cycles.

Buffer: PBS with 0.02% sodium azide, 50% glycerol, pH 7.3.

Validation Data



Western blot analysis of lysates from rat brain, using ATG4B Rabbit pAb (A14112) at 1:1000 dilution.
Secondary antibody: HRP Goat Anti-Rabbit IgG (H+L) (AS014) at 1:10000 dilution.
Lysates/proteins: 25µg per lane.
Blocking buffer: 3% nonfat dry milk in TBST.
Detection: ECL Enhanced Kit (RM00021).
Exposure time: 60s.