

A14093

Leader in Biomolecular Solutions for Life Science



## IKK $\epsilon$ Rabbit pAb

Catalog No.: A14093

### Basic Information

**Observed MW**

80kDa

**Calculated MW**

80kDa

**Category**

Polyclonal Antibody

**Applications**

WB, IHC-P, ELISA

**Cross-Reactivity**

Human, Mouse, Rat

### Background

IKBKE is a noncanonical I-kappa-B (see MIM 164008) kinase (IKK) that is essential for regulating antiviral signaling pathways. IKBKE has also been identified as a breast cancer (MIM 114480) oncogene and is amplified and overexpressed in over 30% of breast carcinomas and breast cancer cell lines (Hutti et al., 2009 [PubMed 19481526]).

### Recommended Dilutions

WB 1:500 - 1:2000

IHC-P 1:50 - 1:200

### Immunogen Information

**Gene ID**

9641

**Swiss Prot**

Q14164

**Immunogen**

Recombinant fusion protein containing a sequence corresponding to amino acids 495-716 of human IKK $\epsilon$  (NP\_054721.1).

**Synonyms**

IKKE; IKKI; IKK-E; IKK-i; IKK $\epsilon$

### Contact



[www.abclonal.com](http://www.abclonal.com)

### Product Information

**Source**

Rabbit

**Isotype**

IgG

**Purification**

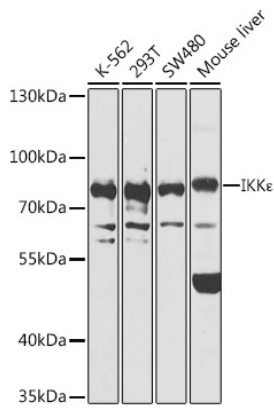
Affinity purification

**Storage**

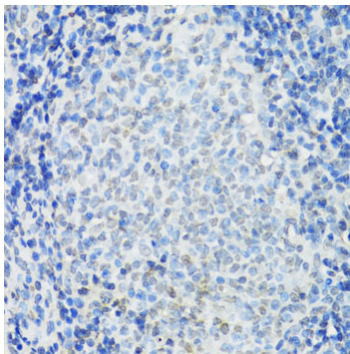
Store at -20°C. Avoid freeze / thaw cycles.

Buffer: PBS with 0.02% sodium azide, 50% glycerol, pH 7.3.

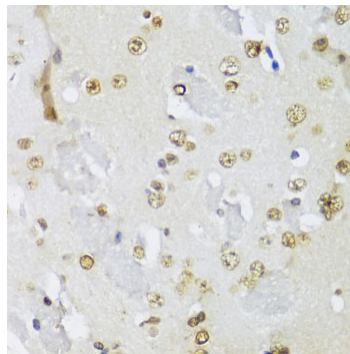
## Validation Data



Western blot analysis of extracts of various cell lines, using IKKε antibody (A14093) at 1:1000 dilution.  
Secondary antibody: HRP Goat Anti-Rabbit IgG (H+L) (A5014) at 1:10000 dilution.  
Lysates/proteins: 25μg per lane.  
Blocking buffer: 3% nonfat dry milk in TBST.  
Detection: ECL Basic Kit (RM00020).  
Exposure time: 10s.



Immunohistochemistry analysis of paraffin-embedded rat spleen using IKKε antibody (A14093) at dilution of 1:100 (40x lens). Perform microwave antigen retrieval with 10 mM PBS buffer pH 7.2 before commencing with IHC staining protocol.



Immunohistochemistry analysis of paraffin-embedded mouse brain using IKKε antibody (A14093) at dilution of 1:100 (40x lens). Perform microwave antigen retrieval with 10 mM PBS buffer pH 7.2 before commencing with IHC staining protocol.