

A14086

Leader in Biomolecular Solutions for Life Science



## Cyclin E2 Rabbit pAb

Catalog No.: A14086

### Basic Information

#### Observed MW

**Calculated MW**  
47kDa

**Category**  
Polyclonal Antibody

**Applications**  
WB,IF/ICC,ELISA

**Cross-Reactivity**  
Human,Rat

### Background

The protein encoded by this gene belongs to the highly conserved cyclin family, whose members are characterized by a dramatic periodicity in protein abundance through the cell cycle. Cyclins function as regulators of CDK kinases. Different cyclins exhibit distinct expression and degradation patterns which contribute to the temporal coordination of each mitotic event. This cyclin forms a complex with and functions as a regulatory subunit of CDK2. This cyclin has been shown to specifically interact with CIP/KIP family of CDK inhibitors, and plays a role in cell cycle G1/S transition. The expression of this gene peaks at the G1-S phase and exhibits a pattern of tissue specificity distinct from that of cyclin E1. A significantly increased expression level of this gene was observed in tumor-derived cells.

### Recommended Dilutions

<b>WB</b>	1:500 - 1:2000
<b>IF/ICC</b>	1:50 - 1:200

### Immunogen Information

<b>Gene ID</b>	<b>Swiss Prot</b>
9134	O96020

#### Immunogen

Recombinant fusion protein containing a sequence corresponding to amino acids 255-404 of human Cyclin E2 (NP\_477097.1).

#### Synonyms

CYCE2; Cyclin E2

### Contact

 | [www.abclonal.com](http://www.abclonal.com)

### Product Information

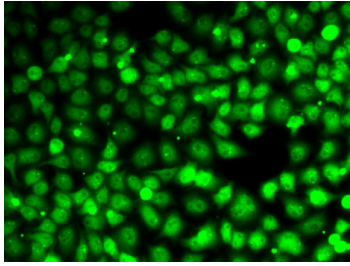
<b>Source</b>	<b>Isotype</b>	<b>Purification</b>
Rabbit	IgG	Affinity purification

#### Storage

Store at -20°C. Avoid freeze / thaw cycles.  
Buffer: PBS with 0.02% sodium azide,50% glycerol,pH7.3.

## Validation Data

---



Immunofluorescence analysis of MCF7 cells  
using Cyclin E2 antibody (A14086).