

A14046

Leader in Biomolecular Solutions for Life Science



## PMS1 Rabbit pAb

Catalog No.: A14046

### Basic Information

**Observed MW**

110kDa

**Calculated MW**

106kDa

**Category**

Polyclonal Antibody

**Applications**

WB, ELISA

**Cross-Reactivity**

Mouse, Rat

### Background

This gene encodes a protein belonging to the DNA mismatch repair mutL/hexB family. This protein is thought to be involved in the repair of DNA mismatches, and it can form heterodimers with MLH1, a known DNA mismatch repair protein. Mutations in this gene cause hereditary nonpolyposis colorectal cancer type 3 (HNPCC3) either alone or in combination with mutations in other genes involved in the HNPCC phenotype, which is also known as Lynch syndrome.

### Recommended Dilutions

WB 1:500 - 1:2000

### Immunogen Information

**Gene ID**

5378

**Swiss Prot**

P54277

**Immunogen**

Recombinant fusion protein containing a sequence corresponding to amino acids 405-619 of human PMS1 (NP\_000525.1).

**Synonyms**

MLH2; PMSL1; hPMS1; HNPCC3; PMS1

### Contact



[www.abclonal.com](http://www.abclonal.com)

### Product Information

**Source**

Rabbit

**Isotype**

IgG

**Purification**

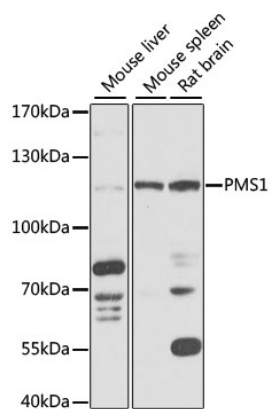
Affinity purification

**Storage**

Store at -20°C. Avoid freeze / thaw cycles.

Buffer: PBS with 0.02% sodium azide, 50% glycerol, pH 7.3.

## Validation Data



Western blot analysis of extracts of various cell lines, using PMS1 antibody (A14046) at 1:1000 dilution.  
Secondary antibody: HRP Goat Anti-Rabbit IgG (H+L) (AS014) at 1:10000 dilution.  
Lysates/proteins: 25µg per lane.  
Blocking buffer: 3% nonfat dry milk in TBST.  
Detection: ECL Basic Kit (RM00020).  
Exposure time: 5s.