

CRMP5/DPYSL5 Rabbit pAb

Catalog No.: A13892

Basic Information

Observed MW

61kDa

Calculated MW

61kDa

Category

Primary antibody

Applications

ELISA, WB

Cross-Reactivity

Human, Rat

Background

This gene encodes a member of the CRMP (collapsing response mediator protein) family thought to be involved in neural development. Antibodies to the encoded protein were found in some patients with neurologic symptoms who had paraneoplastic syndrome. A pseudogene of this gene is found on chromosome 11. Multiple alternatively spliced variants, encoding the same protein, have been identified.

Recommended Dilutions

WB 1:500 - 1:2000

Immunogen Information

Gene ID

56896

Swiss Prot

Q9BPU6

Immunogen

Recombinant fusion protein containing a sequence corresponding to amino acids 445-564 of human CRMP5/CRMP5/DPYSL5 (NP_064519.2).

Synonyms

CV2; CRAM; CRMP5; RTSC4; Ulip6; CRMP-5; CRMP5/DPYSL5

Contact

 | www.abclonal.com

Product Information

Source

Rabbit

Isotype

IgG

Purification

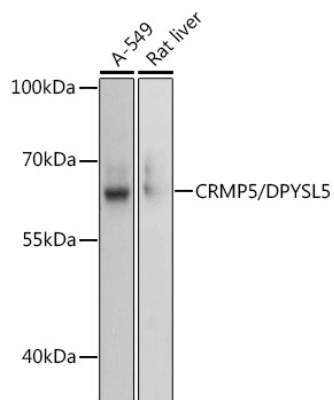
Affinity purification

Storage

Store at -20°C. Avoid freeze / thaw cycles.

Buffer: PBS with 0.01% thimerosal, 50% glycerol, pH7.3.

Validation Data



Western blot analysis of extracts of various cell lines, using CRMP5/CRMP5/DPYSL5 antibody (A13892) at 1:3000 dilution.

Secondary antibody: HRP Goat Anti-Rabbit IgG (H+L) (A5014) at 1:10000 dilution.

Lysates/proteins: 25µg per lane.

Blocking buffer: 3% nonfat dry milk in TBST.

Detection: ECL Basic Kit (RM00020).

Exposure time: 1s.