

A13858

Leader in Biomolecular Solutions for Life Science



## IGFBP5 Rabbit pAb

Catalog No.: A13858

1 Publications

### Basic Information

#### Observed MW

31kDa

#### Calculated MW

31kDa

#### Category

Polyclonal Antibody

#### Applications

WB, IF/ICC, ELISA

#### Cross-Reactivity

Human

### Background

Enables insulin-like growth factor I binding activity. Involved in several processes, including cellular response to cAMP; regulation of smooth muscle cell migration; and regulation of smooth muscle cell proliferation. Part of insulin-like growth factor ternary complex. Biomarker of pulmonary fibrosis.

### Recommended Dilutions

WB	1:500 - 1:2000
IF/ICC	1:50 - 1:200

### Immunogen Information

#### Gene ID

3488

#### Swiss Prot

P24593

#### Immunogen

Recombinant fusion protein containing a sequence corresponding to amino acids 21-272 of human IGFBP5 (NP\_000590.1).

#### Synonyms

IBP5; IGFBP5

### Contact



[www.abclonal.com](http://www.abclonal.com)

### Product Information

#### Source

Rabbit

#### Isotype

IgG

#### Purification

Affinity purification

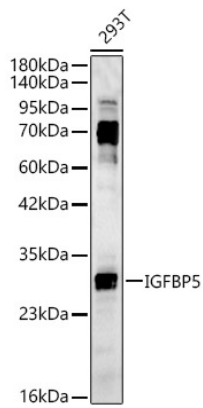
#### Storage

Store at -20°C. Avoid freeze / thaw cycles.

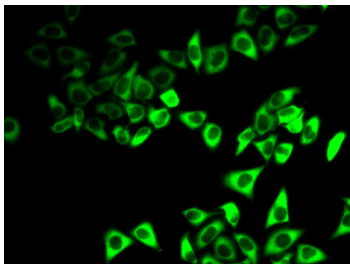
Buffer: PBS with 0.02% sodium azide, 50% glycerol, pH 7.3.

## Validation Data

---



Western blot analysis of 293T, using IGFBP5 Rabbit pAb (A13858) at 1:2000 dilution.  
Secondary antibody: HRP Goat Anti-Rabbit IgG (H+L) (A5014) at 1:10000 dilution.  
Lysates/proteins: 25ug per lane.  
Blocking buffer: 3% nonfat dry milk in TBST.  
Detection: ECL Basic Kit (RM00020).  
Exposure time: 45s.



Immunofluorescence analysis of HeLa cells  
using IGFBP5 antibody (A13858).