

A13840

Leader in Biomolecular Solutions for Life Science



APOL3 Rabbit pAb

Catalog No.: A13840

Basic Information

Observed MW

38kDa

Calculated MW

44kDa

Category

Polyclonal Antibody

Applications

WB, ELISA

Cross-Reactivity

Human, Mouse

Background

This gene is a member of the apolipoprotein L gene family, and it is present in a cluster with other family members on chromosome 22. The encoded protein is found in the cytoplasm, where it may affect the movement of lipids, including cholesterol, and/or allow the binding of lipids to organelles. In addition, expression of this gene is up-regulated by tumor necrosis factor-alpha in endothelial cells lining the normal and atherosclerotic iliac artery and aorta. Alternative splicing results in multiple transcript variants.

Recommended Dilutions

WB 1:500 - 1:2000

Immunogen Information

Gene ID

80833

Swiss Prot

O95236

Immunogen

Recombinant fusion protein containing a sequence corresponding to amino acids 1-331 of human APOL3 (NP_663614.1).

Synonyms

CG121; CG12_1; APOLIII; apoL-III; APOL3

Contact



www.abclonal.com

Product Information

Source

Rabbit

Isotype

IgG

Purification

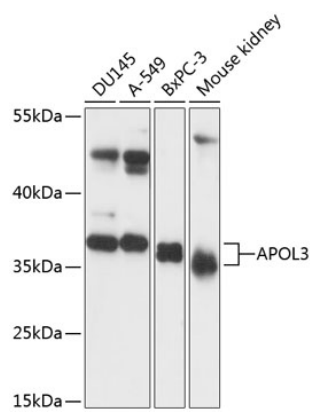
Affinity purification

Storage

Store at -20°C. Avoid freeze / thaw cycles.

Buffer: PBS with 0.01% thimerosal, 50% glycerol, pH 7.3.

Validation Data



Western blot analysis of various lysates using APOL3 Rabbit pAb (A13840) at 1:3000 dilution.
Secondary antibody: HRP Goat Anti-Rabbit IgG (H+L) (AS014) at 1:10000 dilution.
Lysates/proteins: 25µg per lane.
Blocking buffer: 3% nonfat dry milk in TBST.
Detection: ECL Basic Kit (RM00020).
Exposure time: 30s.