

A13762

Leader in Biomolecular Solutions for Life Science



## CYP2W1 Rabbit pAb

Catalog No.: A13762

### Basic Information

**Observed MW**

54kDa

**Calculated MW**

54kDa

**Category**

Polyclonal Antibody

**Applications**

WB, ELISA

**Cross-Reactivity**

Mouse

### Background

This gene encodes a member of the cytochrome P450 superfamily of enzymes. The cytochrome P450 proteins are monooxygenases which catalyze many reactions involved in drug metabolism and synthesis of cholesterol, steroids and other lipids.

### Recommended Dilutions

WB 1:500 - 1:2000

### Immunogen Information

**Gene ID**

54905

**Swiss Prot**

Q8TAV3

**Immunogen**

Recombinant fusion protein containing a sequence corresponding to amino acids 141-490 of human CYP2W1 (NP\_060251.2).

**Synonyms**

CYP2W1

### Contact



[www.abclonal.com](http://www.abclonal.com)

### Product Information

**Source**

Rabbit

**Isotype**

IgG

**Purification**

Affinity purification

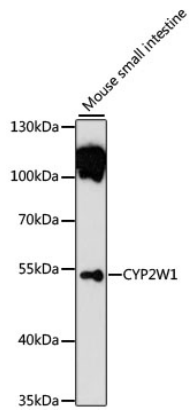
**Storage**

Store at -20°C. Avoid freeze / thaw cycles.

Buffer: PBS with 0.01% thimerosal, 50% glycerol, pH 7.3.

## Validation Data

---



Western blot analysis of lysates from mouse small intestine, using CYP2W1 Rabbit pAb (A13762) at 1:1000 dilution.  
Secondary antibody: HRP Goat Anti-Rabbit IgG (H+L) (AS014) at 1:10000 dilution.  
Lysates/proteins: 25µg per lane.  
Blocking buffer: 3% nonfat dry milk in TBST.  
Detection: ECL Basic Kit (RM00020).  
Exposure time: 90s.