

A13685

Leader in Biomolecular Solutions for Life Science



SLC7A11/xCT Rabbit pAb

Catalog No.: A13685

25 Publications

Basic Information

Observed MW

55kDa

Calculated MW

55kDa

Category

Polyclonal Antibody

Applications

WB, ELISA

Cross-Reactivity

Human, Mouse, Rat

Background

This gene encodes a member of a heteromeric, sodium-independent, anionic amino acid transport system that is highly specific for cysteine and glutamate. In this system, designated Xc(-), the anionic form of cysteine is transported in exchange for glutamate. This protein has been identified as the predominant mediator of Kaposi sarcoma-associated herpesvirus fusion and entry permissiveness into cells. Also, increased expression of this gene in primary gliomas (compared to normal brain tissue) was associated with increased glutamate secretion via the XCT channels, resulting in neuronal cell death.

Recommended Dilutions

WB 1:1000 - 1:5000

Immunogen Information

Gene ID

23657

Swiss Prot

Q9UPY5

Immunogen

A synthetic peptide corresponding to a sequence within amino acids 1-100 of human SLC7A11/xCT (NP_055146.1).

Synonyms

xCT; CCBRI; SLC7A11/xCT

Contact



www.abclonal.com

Product Information

Source

Rabbit

Isotype

IgG

Purification

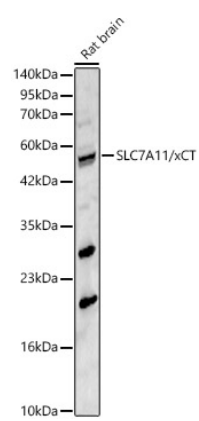
Affinity purification

Storage

Store at -20°C. Avoid freeze / thaw cycles.

Buffer: PBS with 0.05% proclin300, 50% glycerol, pH7.3.

Validation Data



Western blot analysis of lysates from Rat brain using SLC7A11/xCT Rabbit pAb(A13685) at 1:1000 dilution.
Secondary antibody: HRP Goat Anti-Rabbit IgG (H+L) (AS014) at 1:10000 dilution.
Lysates/proteins: 25 µg per lane.
Blocking buffer: 3% nonfat dry milk in TBST.
Detection: ECL Basic Kit (RM00020).
Exposure time: 90s.