

## CXCR4 Rabbit pAb

<b>Catalog No.</b>	A13672	<b>Category</b>	Polyclonal Antibodies
<b>Applications</b>	WB, IHC	<b>Observed MW</b>	41kDa/71kDa
<b>Cross-reactivity</b>	Human, Mouse, Rat	<b>Calculated MW</b>	39kDa/40kDa

### Immunogen Information

<b>Immunogen</b>	Recombinant fusion protein containing a sequence corresponding to amino acids 1-42 of human CXCR4 (NP_001008540.1).
<b>Gene ID</b>	7852
<b>Swiss prot</b>	P61073
<b>Synonyms</b>	CD184;D2S201E;FB22;HM89;HSY3RR;LAP-3;LAP3;LCR1;LESTR;NPY3R;NPYR;NPYRL;NPYY3R;WHIM;WHIMS;CXCR4

### Product information

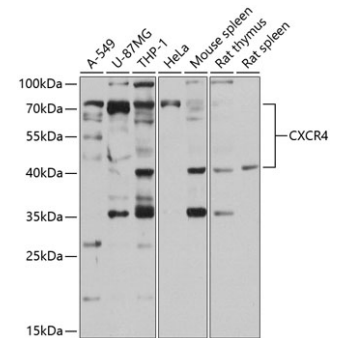
<b>Source</b>	Rabbit
<b>Isotype</b>	IgG
<b>Purification method</b>	Affinity purification
<b>Storage</b>	Store at -20°C. Avoid freeze / thaw cycles. Buffer: PBS with 0.02% sodium azide, 50% glycerol, pH7.3.

### Background

This gene encodes a CXC chemokine receptor specific for stromal cell-derived factor-1. The protein has 7 transmembrane regions and is located on the cell surface. It acts with the CD4 protein to support HIV entry into cells and is also highly expressed in breast cancer cells. Mutations in this gene have been associated with WHIM (warts, hypogammaglobulinemia, infections, and myelokathexis) syndrome. Alternate transcriptional splice variants, encoding different isoforms, have been characterized.

### Recommended Dilutions

WB	1:500 - 1:1000
IHC	1:50 - 1:200



Western blot analysis of extracts of various cell lines, using CXCR4 antibody (A13672) at 1:1000 dilution. Secondary antibody: HRP Goat Anti-Rabbit IgG (H+L) (AS014) at 1:10000 dilution. Lysates/proteins: 25ug per lane. Blocking buffer: 3% nonfat dry milk in TBST. Detection: ECL Basic Kit (RM00020). Exposure time: 90s.