

A13666

Leader in Biomolecular Solutions for Life Science



## [KO Validated] CRY1 Rabbit pAb

Catalog No.: A13666

**KO** Validated

1 Publications

### Basic Information

#### Observed MW

71kDa

#### Calculated MW

66kDa

#### Category

Polyclonal Antibody

#### Applications

WB, ELISA

#### Cross-Reactivity

Human, Mouse

### Background

This gene encodes a flavin adenine dinucleotide-binding protein that is a key component of the circadian core oscillator complex, which regulates the circadian clock. This gene is upregulated by CLOCK/ARNTL heterodimers but then represses this upregulation in a feedback loop using PER/CRY heterodimers to interact with CLOCK/ARNTL. Polymorphisms in this gene have been associated with altered sleep patterns. The encoded protein is widely conserved across plants and animals. Loss of the related gene in mouse results in a shortened circadian cycle in complete darkness.

### Recommended Dilutions

WB 1:500 - 1:1000

### Immunogen Information

#### Gene ID

1407

#### Swiss Prot

Q16526

#### Immunogen

Recombinant fusion protein containing a sequence corresponding to amino acids 496-586 of human CRY1 (NP\_004066.1).

#### Synonyms

DSPD; PHLL1; Y1

### Contact



[www.abclonal.com](http://www.abclonal.com)

### Product Information

#### Source

Rabbit

#### Isotype

IgG

#### Purification

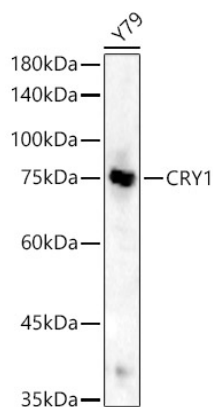
Affinity purification

#### Storage

Store at -20°C. Avoid freeze / thaw cycles.

Buffer: PBS with 0.05% proclin300, 50% glycerol, pH7.3.

## Validation Data



Western blot analysis of extracts of Y79 cells, using CRY1 antibody (A13666) at 1:600 dilution.  
Secondary antibody: HRP Goat Anti-Rabbit IgG (H+L) (AS014) at 1:10000 dilution.  
Lysates/proteins: 25µg per lane.  
Blocking buffer: 3% nonfat dry milk in TBST.  
Detection: ECL Basic Kit (RM00020).  
Exposure time: 30s.

Western blot analysis of extracts from wild type(WT) and CRY1 knockout (KO) HeLa(KO) cells, using CRY1 antibody (A13666) at 1:1000 dilution.  
Secondary antibody: HRP Goat Anti-Rabbit IgG (H+L) (AS014) at 1:10000 dilution.  
Lysates/proteins: 25µg per lane.  
Blocking buffer: 3% nonfat dry milk in TBST.  
Detection: ECL Basic Kit (RM00020).  
Exposure time: 10s.

