

A13660

Leader in Biomolecular Solutions for Life Science



Ceruloplasmin Rabbit pAb

Catalog No.: A13660

Basic Information

Observed MW

Calculated MW
122kDa

Category
Polyclonal Antibody

Applications
IF/ICC,ELISA

Cross-Reactivity
Human,Mouse,Rat

Background

The protein encoded by this gene is a metalloprotein that binds most of the copper in plasma and is involved in the peroxidation of Fe(II)transferrin to Fe(III) transferrin. Mutations in this gene cause aceruloplasminemia, which results in iron accumulation and tissue damage, and is associated with diabetes and neurologic abnormalities. Two transcript variants, one protein-coding and the other not protein-coding, have been found for this gene.

Recommended Dilutions

IF/ICC 1:50 - 1:200

Immunogen Information

Gene ID 1356	Swiss Prot P00450
------------------------	-----------------------------

Immunogen

Recombinant fusion protein containing a sequence corresponding to amino acids 680-790 of human Ceruloplasmin (NP_000087.1).

Synonyms

CP-2; AB073614; Ceruloplasmin

Contact



www.abclonal.com

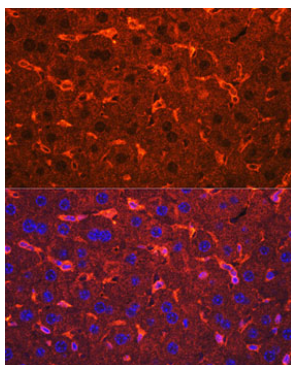
Product Information

Source Rabbit	Isotype IgG	Purification Affinity purification
-------------------------	-----------------------	--

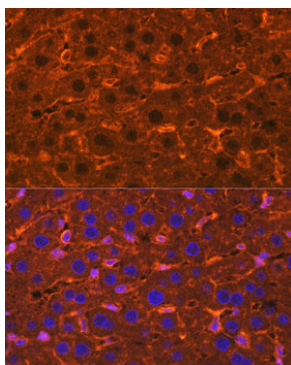
Storage

Store at -20°C. Avoid freeze / thaw cycles.
Buffer: PBS with 0.01% thimerosal,50% glycerol,pH7.3.

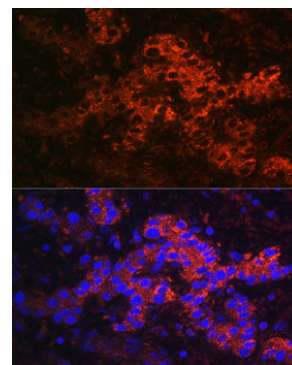
Validation Data



Immunofluorescence analysis of Mouse liver using Ceruloplasmin Rabbit pAb (A13660) at dilution of 1:100. Blue: DAPI for nuclear staining.



Immunofluorescence analysis of Rat liver using Ceruloplasmin Rabbit pAb (A13660) at dilution of 1:100. Blue: DAPI for nuclear staining.



Immunofluorescence analysis of Human liver cancer using Ceruloplasmin Rabbit pAb (A13660) at dilution of 1:100. Blue: DAPI for nuclear staining.