

A13649

Leader in Biomolecular Solutions for Life Science



## RBL2 Rabbit pAb

Catalog No.: A13649

1 Publications

### Basic Information

#### Observed MW

130kDa

#### Calculated MW

128kDa

#### Category

Mouse Monoclonal Antibody

#### Applications

WB,IF/ICC,ELISA

#### Cross-Reactivity

Human,Mouse

### Background

Enables promoter-specific chromatin binding activity. Involved in regulation of lipid kinase activity. Acts upstream of or within negative regulation of gene expression. Located in chromosome; cytosol; and nuclear lumen.

### Recommended Dilutions

WB	1:500 - 1:1000
IF/ICC	1:50 - 1:200

### Immunogen Information

#### Gene ID

5934

#### Swiss Prot

Q08999

#### Immunogen

A synthetic peptide corresponding to a sequence within amino acids 413-613 of human RBL2 (NP\_005602.3).

#### Synonyms

Rb2; P130; BRUWAG; RBL2

### Contact



[www.abclonal.com](http://www.abclonal.com)

### Product Information

#### Source

Rabbit

#### Isotype

IgG

#### Purification

Affinity purification

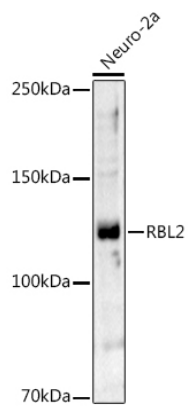
#### Storage

Store at -20°C. Avoid freeze / thaw cycles.

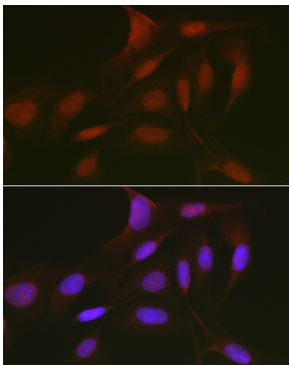
Buffer: PBS with 0.05% proclin300,50% glycerol,pH7.3.

## Validation Data

---



Western blot analysis of extracts of Neuro-2a cells, using RBL2 antibody (A13649) at 1:1000 dilution.  
Secondary antibody: HRP Goat Anti-Rabbit IgG (H+L) (AS014) at 1:10000 dilution.  
Lysates/proteins: 25µg per lane.  
Blocking buffer: 3% nonfat dry milk in TBST.  
Detection: ECL Basic Kit (RM00020).  
Exposure time: 120s.



Immunofluorescence analysis of U2OS cells using RBL2 Rabbit pAb (A13649) at dilution of 1:50 (40x lens). Blue: DAPI for nuclear staining.