

A13578

Leader in Biomolecular Solutions for Life Science



## TIMM17A Rabbit pAb

Catalog No.: A13578

### Basic Information

**Observed MW**

18kDa

**Calculated MW**

18kDa

**Category**

Polyclonal Antibody

**Applications**

WB,IF/ICC,ELISA

**Cross-Reactivity**

Human,Mouse

### Background

Predicted to contribute to protein transmembrane transporter activity. Predicted to be involved in protein import into mitochondrial matrix. Located in mitochondrial inner membrane and nucleoplasm. Is integral component of mitochondrial inner membrane. Part of TIM23 mitochondrial import inner membrane translocase complex.

### Recommended Dilutions

**WB** 1:500 - 1:2000

**IF/ICC** 1:50 - 1:200

### Immunogen Information

**Gene ID**

10440

**Swiss Prot**

Q99595

**Immunogen**

Recombinant fusion protein containing a sequence corresponding to amino acids 1-171 of human TIMM17A (NP\_006326.1).

**Synonyms**

TIM17; TIM17A; TIMM17A

### Contact



[www.abclonal.com](http://www.abclonal.com)

### Product Information

**Source**

Rabbit

**Isotype**

IgG

**Purification**

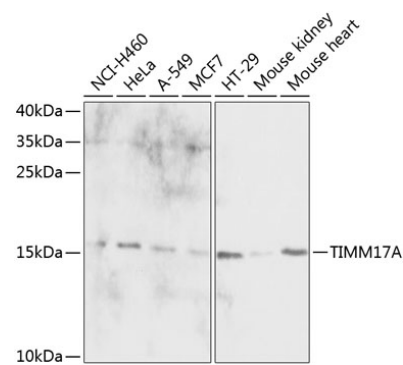
Affinity purification

**Storage**

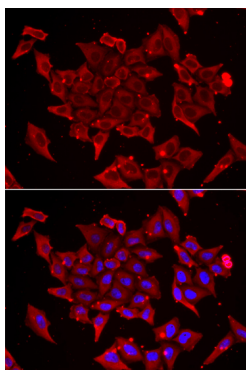
Store at -20°C. Avoid freeze / thaw cycles.

Buffer: PBS with 0.02% sodium azide,50% glycerol,pH7.3.

## Validation Data



Western blot analysis of extracts of various cell lines, using TIMM17A antibody (A13578) at 1:1000 dilution.  
Secondary antibody: HRP Goat Anti-Rabbit IgG (H+L) (AS014) at 1:10000 dilution.  
Lysates/proteins: 25µg per lane.  
Blocking buffer: 3% nonfat dry milk in TBST.  
Detection: ECL Basic Kit (RM00020).  
Exposure time: 30s.



Immunofluorescence analysis of U2OS cells using TIMM17A antibody (A13578). Blue: DAPI for nuclear staining.