

A13552

Leader in Biomolecular Solutions for Life Science



TFAM Rabbit pAb

Catalog No.: A13552

18 Publications

Basic Information

Observed MW

25kDa

Calculated MW

29kDa

Category

Mouse Monoclonal Antibody

Applications

WB, IHC-P, IF/ICC, ChIP, ELISA

Cross-Reactivity

Human, Mouse, Rat

Background

This gene encodes a key mitochondrial transcription factor containing two high mobility group motifs. The encoded protein also functions in mitochondrial DNA replication and repair. Sequence polymorphisms in this gene are associated with Alzheimer's and Parkinson's diseases. There are pseudogenes for this gene on chromosomes 6, 7, and 11. Alternative splicing results in multiple transcript variants.

Recommended Dilutions

WB	1:500 - 1:1000
IHC-P	1:50 - 1:200
IF/ICC	1:50 - 1:200
ChIP	5µg antibody for 10µg-15µg of Chromatin

Immunogen Information

Gene ID

7019

Swiss Prot

Q00059

Immunogen

A synthetic peptide corresponding to a sequence within amino acids 100-200 of human TFAM (NP_003192.1).

Synonyms

TCF6; MTTF1; MTTFA; TCF6L1; TCF6L2; TCF6L3; MTDPS15; TFAM

Contact



www.abclonal.com

Product Information

Source

Rabbit

Isotype

IgG

Purification

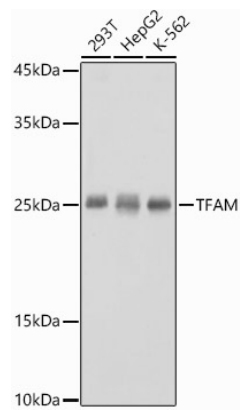
Affinity purification

Storage

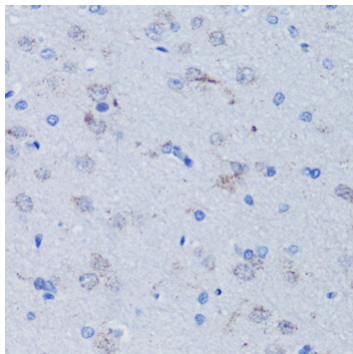
Store at -20°C. Avoid freeze / thaw cycles.

Buffer: PBS with 0.05% proclin300, 50% glycerol, pH7.3.

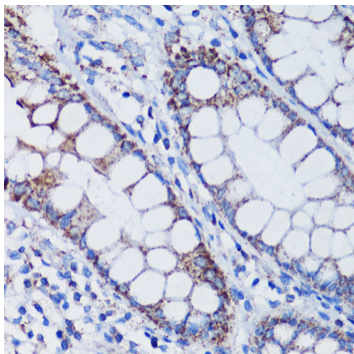
Validation Data



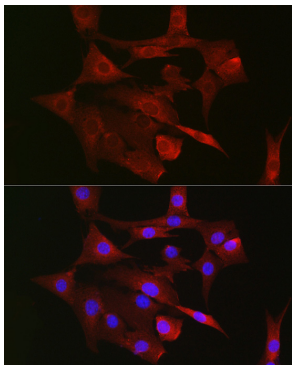
Western blot analysis of various lysates using TFAM Rabbit pAb (A13552) at 1:1000 dilution.
Secondary antibody: HRP Goat Anti-Rabbit IgG (H+L) (AS014) at 1:10000 dilution.
Lysates/proteins: 25µg per lane.
Blocking buffer: 3% nonfat dry milk in TBST.
Detection: ECL Basic Kit (RM00020).
Exposure time: 1s.



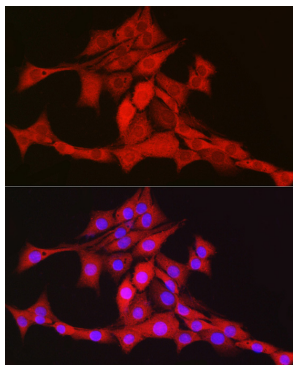
Immunohistochemistry analysis of TFAM in paraffin-embedded rat brain using TFAM Rabbit pAb (A13552) at dilution of 1:100 (40x lens).Perform microwave antigen retrieval with 10 mM PBS buffer pH 7.2 before commencing with IHC staining protocol.



Immunohistochemistry analysis of TFAM in paraffin-embedded human colon using TFAM Rabbit pAb (A13552) at dilution of 1:100 (40x lens).Perform microwave antigen retrieval with 10 mM PBS buffer pH 7.2 before commencing with IHC staining protocol.



Immunofluorescence analysis of NIH/3T3 cells using TFAM Rabbit pAb (A13552) at dilution of 1:100 (40x lens). Secondary antibody: Cy3 Goat Anti-Rabbit IgG (H+L) (AS007) at 1:500 dilution. Blue: DAPI for nuclear staining.



Immunofluorescence analysis of PC-12 cells using TFAM Rabbit pAb (A13552) at dilution of 1:100 (40x lens). Secondary antibody: Cy3 Goat Anti-Rabbit IgG (H+L) (AS007) at 1:500 dilution. Blue: DAPI for nuclear staining.



Chromatin immunoprecipitation analysis of extracts of K-562 cells, using TFAM antibody (A13552) and rabbit IgG.The amount of immunoprecipitated DNA was checked by quantitative PCR. Histogram was constructed by the ratios of the immunoprecipitated DNA to the input.