

A13539

Leader in Biomolecular Solutions for Life Science



## PYGB Rabbit pAb

Catalog No.: A13539

### Basic Information

**Observed MW**

100kDa

**Calculated MW**

97kDa

**Category**

Polyclonal Antibody

**Applications**

WB, ELISA

**Cross-Reactivity**

Human, Mouse, Rat

### Background

The protein encoded by this gene is a glycogen phosphorylase found predominantly in the brain. The encoded protein forms homodimers which can associate into homotetramers, the enzymatically active form of glycogen phosphorylase. The activity of this enzyme is positively regulated by AMP and negatively regulated by ATP, ADP, and glucose-6-phosphate. This enzyme catalyzes the rate-determining step in glycogen degradation.

### Recommended Dilutions

WB 1:500 - 1:2000

### Immunogen Information

**Gene ID**

5834

**Swiss Prot**

P11216

**Immunogen**

Recombinant fusion protein containing a sequence corresponding to amino acids 544-843 of human PYGB (NP\_002853.2).

**Synonyms**

GPBB; PYGB

### Contact



[www.abclonal.com](http://www.abclonal.com)

### Product Information

**Source**

Rabbit

**Isotype**

IgG

**Purification**

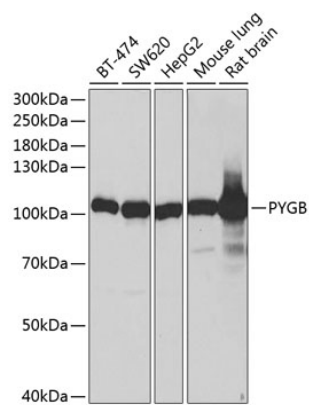
Affinity purification

**Storage**

Store at -20°C. Avoid freeze / thaw cycles.

Buffer: PBS with 0.02% sodium azide, 50% glycerol, pH 7.3.

# Validation Data



Western blot analysis of extracts of various cell lines, using PYGB antibody (A13539) at 1:1000 dilution.  
Secondary antibody: HRP Goat Anti-Rabbit IgG (H+L) (AS014) at 1:10000 dilution.  
Lysates/proteins: 25µg per lane.  
Blocking buffer: 3% nonfat dry milk in TBST.  
Detection: ECL Basic Kit (RM00020).  
Exposure time: 30s.