

A13523

Leader in Biomolecular Solutions for Life Science



von Willebrand factor (VWF) Rabbit mAb

Catalog No.: A13523

Recombinant

1 Publications

Basic Information

Observed MW

309kDa

Calculated MW

309kDa

Category

SMab Recombinant Monoclonal Antibody

Applications

WB, IHC-P, ELISA

Cross-Reactivity

Human, Mouse

CloneNo number

ARC0716

Background

This gene encodes a glycoprotein involved in hemostasis. The encoded preproprotein is proteolytically processed following assembly into large multimeric complexes. These complexes function in the adhesion of platelets to sites of vascular injury and the transport of various proteins in the blood. Mutations in this gene result in von Willebrand disease, an inherited bleeding disorder. An unprocessed pseudogene has been found on chromosome 22.

Recommended Dilutions

WB	1:500 - 1:1000
IHC-P	1:50 - 1:200

Immunogen Information

Gene ID

7450

Swiss Prot

P04275

Immunogen

Recombinant fusion protein containing a sequence corresponding to amino acids 1150-1300 of human von Willebrand factor (VWF) (P04275).

Synonyms

VWD; F8VWF; von Willebrand factor (VWF)

Contact



www.abclonal.com

Product Information

Source

Rabbit

Isotype

IgG

Purification

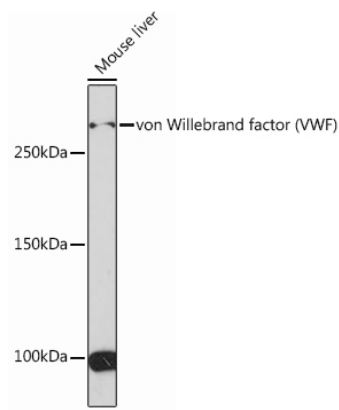
Affinity purification

Storage

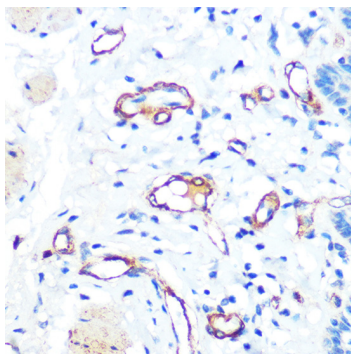
Store at -20°C. Avoid freeze / thaw cycles.

Buffer: PBS with 0.02% sodium azide, 0.05% BSA, 50% glycerol, pH7.3.

Validation Data



Western blot analysis of extracts of Mouse liver, using von Willebrand factor (VWF) Rabbit mAb (A13523) at 1:1000 dilution.
Secondary antibody: HRP Goat Anti-Rabbit IgG (H+L) (AS014) at 1:10000 dilution.
Lysates/proteins: 25µg per lane.
Blocking buffer: 3% nonfat dry milk in TBST.
Detection: ECL Basic Kit (RM00020).
Exposure time: 3min.



Immunohistochemistry analysis of paraffin-embedded human esophageal using von Willebrand factor (VWF) Rabbit mAb (A13523) at dilution of 1:100 (40x lens). Perform microwave antigen retrieval with 10 mM PBS buffer pH 7.2 before commencing with IHC staining protocol.