

## HMOX1 Polyclonal Antibody

<b>Catalog No.</b>	A1346	<b>Category</b>	Polyclonal Antibodies
<b>Applications</b>	WB, IF	<b>Observed MW</b>	33kDa
<b>Cross-reactivity</b>	Human, Mouse	<b>Calculated MW</b>	32kDa

### Immunogen Information

<b>Immunogen</b>	Recombinant protein of human HMOX1
<b>Gene ID</b>	3162
<b>Swiss prot</b>	P09601
<b>Synonyms</b>	bK286B10;HMOX1D;HO-1;HSP32

### Product information

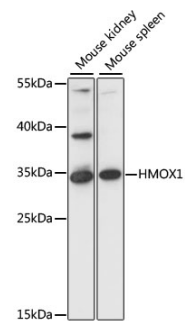
<b>Source</b>	Rabbit
<b>Isotype</b>	IgG
<b>Purification method</b>	Affinity purification
<b>Storage</b>	Store at -20°C. Avoid freeze / thaw cycles. Buffer: PBS with 0.02% sodium azide, 50% glycerol, pH7.3.

### Background

Heme oxygenase, an essential enzyme in heme catabolism, cleaves heme to form biliverdin, which is subsequently converted to bilirubin by biliverdin reductase, and carbon monoxide, a putative neurotransmitter. Heme oxygenase activity is induced by its substrate heme and by various nonheme substances. Heme oxygenase occurs as 2 isozymes, an inducible heme oxygenase-1 and a constitutive heme oxygenase-2. HMOX1 and HMOX2 belong to the heme oxygenase family.

### Recommended Dilutions

WB	1:500 - 1:2000
IF	1:50 - 1:200



Western blot analysis of extracts of various cell lines, using HMOX1 antibody (A1346) at 1:1000 dilution. Secondary antibody: HRP Goat Anti-Rabbit IgG (H+L) (AS014) at 1:10000 dilution.  
Lysates/proteins: 25ug per lane.  
Blocking buffer: 3% nonfat dry milk in TBST.  
Detection: ECL Basic Kit (RM00020).  
Exposure time: 90s.