

A13453

Leader in Biomolecular Solutions for Life Science



TET3 Rabbit pAb

Catalog No.: A13453

1 Publications

Basic Information

Observed MW

Calculated MW

194kDa

Category

Mouse Monoclonal Antibody

Applications

IHC-P,IF/ICC,ELISA

Cross-Reactivity

Human

Background

Enables methyl-CpG binding activity and zinc ion binding activity. Involved in histone H3-K4 trimethylation; positive regulation of transcription by RNA polymerase II; and protein O-linked glycosylation. Predicted to be located in cytoplasm and male pronucleus. Predicted to be active in nucleus. Biomarker of esophagus squamous cell carcinoma.

Recommended Dilutions

IHC-P 1:50 - 1:200

IF/ICC 1:50 - 1:200

Immunogen Information

Gene ID

200424

Swiss Prot

O43151

Immunogen

Recombinant fusion protein containing a sequence corresponding to amino acids 1525-1660 of human TET3 (NP_001274420.1).

Synonyms

BEFAHRS; hCG_40738; TET3

Contact



www.abclonal.com

Product Information

Source

Rabbit

Isotype

IgG

Purification

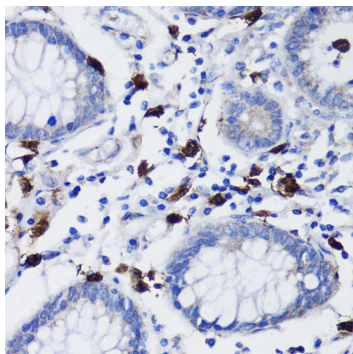
Affinity purification

Storage

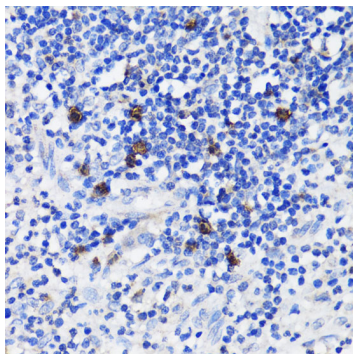
Store at -20°C. Avoid freeze / thaw cycles.

Buffer: PBS with 0.02% sodium azide,50% glycerol,pH7.3.

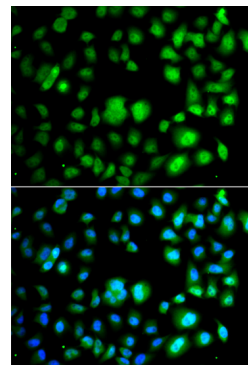
Validation Data



Immunohistochemistry analysis of TET3 in paraffin-embedded human colon carcinoma using TET3 Rabbit pAb (A13453) at dilution of 1:200 (40x lens). Perform microwave antigen retrieval with 10 mM PBS buffer pH 7.2 before commencing with IHC staining protocol.



Immunohistochemistry analysis of TET3 in paraffin-embedded human appendix using TET3 Rabbit pAb (A13453) at dilution of 1:200 (40x lens). Perform microwave antigen retrieval with 10 mM PBS buffer pH 7.2 before commencing with IHC staining protocol.



Immunofluorescence analysis of A549 cells using TET3 Rabbit pAb (A13453). Secondary antibody: Cy3 Goat Anti-Rabbit IgG (H+L) (AS007) at 1:500 dilution. Blue: DAPI for nuclear staining.