

A13414

Leader in Biomolecular Solutions for Life Science



PELP1 Rabbit pAb

Catalog No.: A13414

1 Publications

Basic Information

Observed MW

Calculated MW
120kDa

Category

Polyclonal Antibody

Applications

IHC-P, ELISA

Cross-Reactivity

Human, Mouse, Rat

Background

This gene encodes a transcription factor which coactivates transcription of estrogen receptor responsive genes and corepresses genes activated by other hormone receptors or sequence-specific transcription factors. Expression of this gene is regulated by both members of the estrogen receptor family. This gene may be involved in the progression of several types of cancer. Alternative splicing results in multiple transcript variants.

Recommended Dilutions

IHC-P 1:50 - 1:200

Immunogen Information

Gene ID
27043

Swiss Prot
Q8IZL8

Immunogen

Recombinant protein of human PELP1

Synonyms

MNAR; P160; PELP1

Contact



www.abclonal.com

Product Information

Source
Rabbit

Isotype
IgG

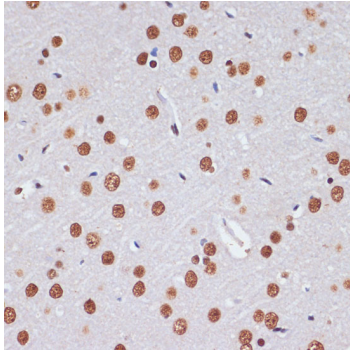
Purification
Affinity purification

Storage

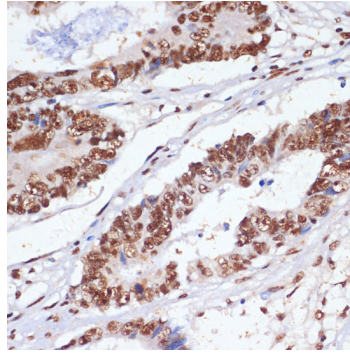
Store at -20°C. Avoid freeze / thaw cycles.

Buffer: PBS with 0.02% sodium azide, 50% glycerol, pH 7.3.

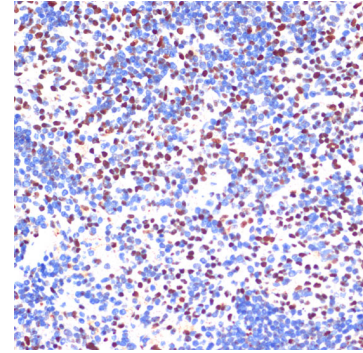
Validation Data



Immunohistochemistry analysis of paraffin-embedded rat brain using PELP1 antibody (A13414) at dilution of 1:100 (40x lens). Perform microwave antigen retrieval with 10 mM PBS buffer pH 7.2 before commencing with IHC staining protocol.



Immunohistochemistry analysis of paraffin-embedded human colon carcinoma using PELP1 antibody (A13414) at dilution of 1:100 (40x lens). Perform microwave antigen retrieval with 10 mM PBS buffer pH 7.2 before commencing with IHC staining protocol.



Immunohistochemistry analysis of paraffin-embedded mouse spleen using PELP1 antibody (A13414) at dilution of 1:100 (40x lens). Perform microwave antigen retrieval with 10 mM PBS buffer pH 7.2 before commencing with IHC staining protocol.