

SOD2 Polyclonal Antibody

Catalog No.	A1340	Category	Polyclonal Antibodies
Applications	WB, IHC, IF	Observed MW	23kDa
Cross-reactivity	Human, Mouse, Rat	Calculated MW	18kDa/19kDa/20kDa/24kDa

Immunogen Information

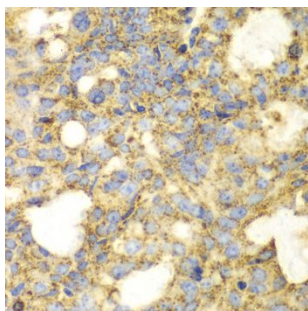
Immunogen	Recombinant fusion protein containing a sequence corresponding to amino acids 25-222 of human SOD2 (NP_000627.2).
Gene ID	6648
Swiss prot	P04179
Synonyms	IPO-B; IPOB; Mn-SOD; MNSOD; MVCD6

Product information

Source	Rabbit
Isotype	IgG
Purification method	Affinity purification
Storage	Store at -20°C. Avoid freeze / thaw cycles. Buffer: PBS with 0.02% sodium azide, 50% glycerol, pH7.3.

Background

This gene is a member of the iron/manganese superoxide dismutase family. It encodes a mitochondrial protein that forms a homotetramer and binds one manganese ion per subunit. This protein binds to the superoxide byproducts of oxidative phosphorylation and converts them to hydrogen peroxide and diatomic oxygen. Mutations in this gene have been associated with idiopathic cardiomyopathy (IDC), premature aging, sporadic motor neuron disease, and cancer. Alternative splicing of this gene results in multiple transcript variants. A related pseudogene has been identified on chromosome 1.



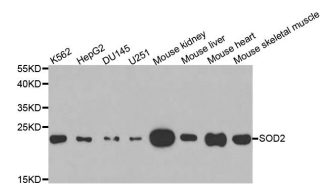
Immunohistochemistry of paraffin-embedded human oophoroma using SOD2 antibody (A1340) at dilution of 1:100 (40x lens).

Recommended Dilutions

WB 1:500 -
1:2000

IHC 1:50 -
1:200

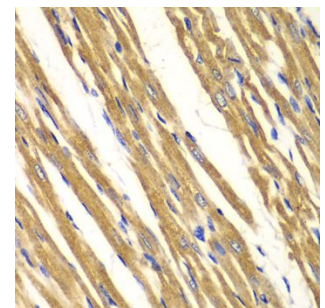
IF 1:10 -
1:100



Western blot analysis of extracts of various cell lines, using SOD2 antibody (A1340) at 1:1000 dilution.

Secondary antibody: HRP Goat Anti-Rabbit IgG (H+L) (AS014) at 1:10000 dilution.

Lysates/proteins: 25ug per lane.
Blocking buffer: 3% nonfat dry milk in TBST.



Immunohistochemistry of paraffin-embedded rat heart using SOD2 antibody (A1340) at dilution of 1:100 (40x lens).