

A13361

Leader in Biomolecular Solutions for Life Science



## NR2E1/TLX Rabbit pAb

Catalog No.: A13361

### Basic Information

**Observed MW**

43kDa

**Calculated MW**

43kDa

**Category**

Polyclonal Antibody

**Applications**

WB, ELISA

**Cross-Reactivity**

Human

### Background

The protein encoded by this gene is an orphan receptor involved in retinal development. The encoded protein also regulates adult neural stem cell proliferation and may be involved in control of aggressive behavior. Two transcript variants encoding different isoforms have been found for this gene.

### Recommended Dilutions

WB 1:500 - 1:2000

### Immunogen Information

**Gene ID**

7101

**Swiss Prot**

Q9Y466

**Immunogen**

Recombinant fusion protein containing a sequence corresponding to amino acids 106-385 of human NR2E1/TLX (NP\_003260.1).

**Synonyms**

TLL; TLX; XTLL; NR2E1/TLX

### Contact



[www.abclonal.com](http://www.abclonal.com)

### Product Information

**Source**

Rabbit

**Isotype**

IgG

**Purification**

Affinity purification

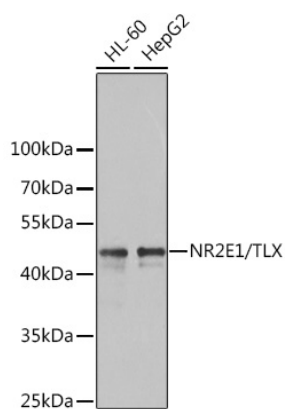
**Storage**

Store at -20°C. Avoid freeze / thaw cycles.

Buffer: PBS with 0.02% sodium azide, 50% glycerol, pH 7.3.

## Validation Data

---



Western blot analysis of various lysates using NR2E1/TLX Rabbit pAb (A13361) at 1:1000 dilution.  
Secondary antibody: HRP Goat Anti-Rabbit IgG (H+L) (AS014) at 1:10000 dilution.  
Lysates/proteins: 25µg per lane.  
Blocking buffer: 3% nonfat dry milk in TBST.  
Detection: ECL Basic Kit (RM00020).  
Exposure time: 90s.