

A1335

Leader in Biomolecular Solutions for Life Science



## von Willebrand factor (VWF) Rabbit pAb

Catalog No.: A1335

8 Publications

### Basic Information

#### Observed MW

309kDa

#### Calculated MW

309kDa

#### Category

Mouse Monoclonal Antibody

#### Applications

WB, IHC-P, ELISA

#### Cross-Reactivity

Human

### Background

This gene encodes a glycoprotein involved in hemostasis. The encoded preproprotein is proteolytically processed following assembly into large multimeric complexes. These complexes function in the adhesion of platelets to sites of vascular injury and the transport of various proteins in the blood. Mutations in this gene result in von Willebrand disease, an inherited bleeding disorder. An unprocessed pseudogene has been found on chromosome 22.

### Recommended Dilutions

WB	1:500 - 1:1000
IHC-P	1:50 - 1:200

### Immunogen Information

#### Gene ID

7450

#### Swiss Prot

P04275

#### Immunogen

Recombinant fusion protein containing a sequence corresponding to amino acids 2645-2813 of human von Willebrand factor (VWF) (NP\_000543.2).

#### Synonyms

VWD; F8VWF; von Willebrand factor (VWF)

### Contact



[www.abclonal.com](http://www.abclonal.com)

### Product Information

#### Source

Rabbit

#### Isotype

IgG

#### Purification

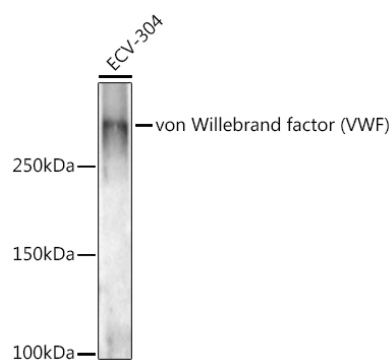
Affinity purification

#### Storage

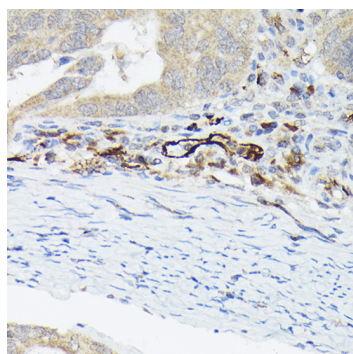
Store at -20°C. Avoid freeze / thaw cycles.

Buffer: PBS with 0.05% proclin300, 50% glycerol, pH7.3.

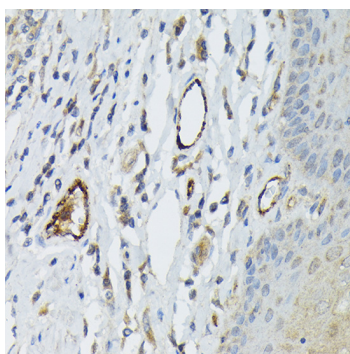
## Validation Data



Western blot analysis of lysates from ECV-304 cells, using von Willebrand factor (VWF) Rabbit pAb (A1335) at 1:1000 dilution.  
Secondary antibody: HRP Goat Anti-Rabbit IgG (H+L) (AS014) at 1:10000 dilution.  
Lysates/proteins: 25 µg per lane.  
Blocking buffer: 3% nonfat dry milk in TBST.  
Detection: ECL Enhanced Kit (RM00021).  
Exposure time: 180s.



Immunohistochemistry analysis of von Willebrand factor (VWF) in paraffin-embedded human colon carcinoma using von Willebrand factor (VWF) Rabbit pAb (A1335) at dilution of 1:50 (40x lens). Perform high pressure antigen retrieval with 10 mM citrate buffer pH 6.0 before commencing with IHC staining protocol.



Immunohistochemistry analysis of von Willebrand factor (VWF) in paraffin-embedded human esophagus using von Willebrand factor (VWF) Rabbit pAb (A1335) at dilution of 1:50 (40x lens). Perform high pressure antigen retrieval with 10 mM citrate buffer pH 6.0 before commencing with IHC staining protocol.