

A13260

Leader in Biomolecular Solutions for Life Science



YTHDF1 Rabbit pAb

Catalog No.: A13260

Basic Information

Observed MW

70kDa

Calculated MW

61kDa

Category

Polyclonal Antibody

Applications

WB,IF/ICC,IP,ELISA

Cross-Reactivity

Human,Mouse,Rat

Background

Enables N6-methyladenosine-containing RNA binding activity and ribosome binding activity. Involved in mRNA destabilization; positive regulation of translational initiation; and stress granule assembly. Located in P-body and cytoplasmic stress granule.

Recommended Dilutions

WB	1:100 - 1:500
IF/ICC	1:50 - 1:200
IP	1:50 - 1:200

Immunogen Information

Gene ID

54915

Swiss Prot

Q9BYJ9

Immunogen

Recombinant fusion protein containing a sequence corresponding to amino acids 1-200 of human YTHDF1 (NP_060268.2).

Synonyms

DF1; C20orf21; YTHDF1

Contact



www.abclonal.com

Product Information

Source

Rabbit

Isotype

IgG

Purification

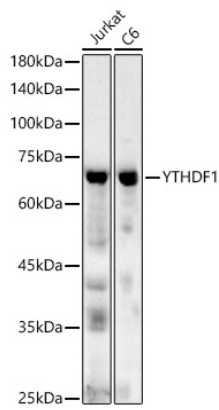
Affinity purification

Storage

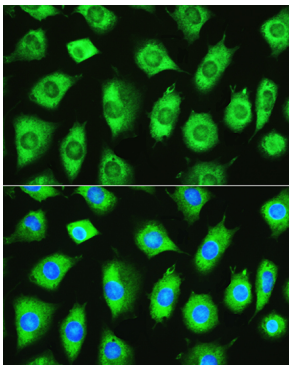
Store at -20°C. Avoid freeze / thaw cycles.

Buffer: PBS with 0.01% thimerosal,50% glycerol,pH7.3.

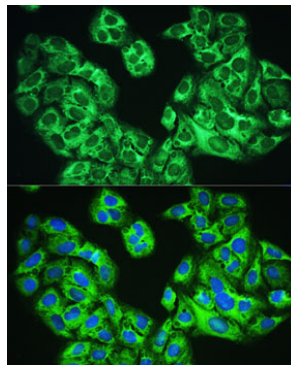
Validation Data



Western blot analysis of various lysates, using YTHDF1 antibody (A13260) at 1:500 dilution.
Secondary antibody: HRP Goat Anti-Rabbit IgG (H+L) (A5014) at 1:10000 dilution.
Lysates/proteins: 25µg per lane.
Blocking buffer: 3% nonfat dry milk in TBST.
Detection: ECL Basic Kit (RM00020).
Exposure time: 60s.



Immunofluorescence analysis of L929 cells using YTHDF1 Rabbit pAb (A13260) at dilution of 1:100. Blue: DAPI for nuclear staining.



Immunofluorescence analysis of U2OS cells using YTHDF1 Rabbit pAb (A13260) at dilution of 1:100. Blue: DAPI for nuclear staining.