

A13257

Leader in Biomolecular Solutions for Life Science



RRP12 Rabbit pAb

Catalog No.: A13257

Basic Information

Observed MW

144kDa

Calculated MW

144kDa

Category

Polyclonal Antibody

Applications

WB, ELISA

Cross-Reactivity

Human, Mouse, Rat

Background

Enables RNA binding activity. Predicted to be involved in rRNA processing. Located in cytosol; nucleolus; and plasma membrane.

Recommended Dilutions

WB 1:1000 - 1:2000

Immunogen Information

Gene ID

23223

Swiss Prot

Q5JTH9

Immunogen

Recombinant fusion protein containing a sequence corresponding to amino acids 1-160 of human RRP12 (NP_055994.2).

Synonyms

KIAA0690; RRP12

Contact



www.abclonal.com

Product Information

Source

Rabbit

Isotype

IgG

Purification

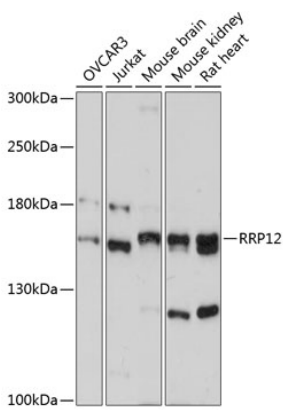
Affinity purification

Storage

Store at -20°C. Avoid freeze / thaw cycles.

Buffer: PBS with 0.01% thimerosal, 50% glycerol, pH7.3.

Validation Data



Western blot analysis of various lysates using RRP12 Rabbit pAb (A13257) at 1:3000 dilution.
Secondary antibody: HRP Goat Anti-Rabbit IgG (H+L) (AS014) at 1:10000 dilution.
Lysates/proteins: 25µg per lane.
Blocking buffer: 3% nonfat dry milk in TBST.
Detection: ECL Basic Kit (RM00020).
Exposure time: 90s.