

A13241

Leader in Biomolecular Solutions for Life Science



## RBM12B Rabbit pAb

Catalog No.: A13241

### Basic Information

#### Observed MW

140kDa

#### Calculated MW

118kDa

#### Category

Polyclonal Antibody

#### Applications

WB, ELISA

#### Cross-Reactivity

Human

### Background

Enables RNA binding activity. Predicted to be involved in regulation of RNA splicing. Predicted to be part of ribonucleoprotein complex. Predicted to be active in nucleoplasm.

### Recommended Dilutions

WB 1:500 - 1:2000

### Immunogen Information

#### Gene ID

389677

#### Swiss Prot

Q8IXT5

#### Immunogen

Recombinant fusion protein containing a sequence corresponding to amino acids 200-400 of human RBM12B (NP\_976324.2).

#### Synonyms

MGC:33837; RBM12B

### Contact



[www.abclonal.com](http://www.abclonal.com)

### Product Information

#### Source

Rabbit

#### Isotype

IgG

#### Purification

Affinity purification

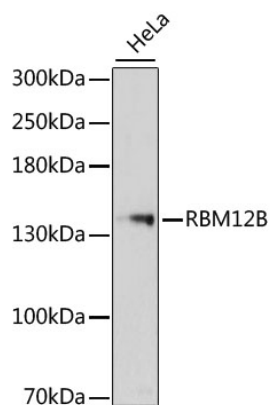
#### Storage

Store at -20°C. Avoid freeze / thaw cycles.

Buffer: PBS with 0.02% sodium azide, 50% glycerol, pH7.3.

## Validation Data

---



Western blot analysis of lysates from HeLa cells, using RBM12B Rabbit pAb (A13241) at 1:3000 dilution.  
Secondary antibody: HRP Goat Anti-Rabbit IgG (H+L) (A5014) at 1:10000 dilution.  
Lysates/proteins: 25µg per lane.  
Blocking buffer: 3% nonfat dry milk in TBST.  
Detection: ECL Basic Kit (RM00020).  
Exposure time: 90s.