

A13218

Leader in Biomolecular Solutions for Life Science



## SLC25A38 Rabbit pAb

Catalog No.: A13218

### Basic Information

**Observed MW**

33kDa

**Calculated MW**

34kDa

**Category**

Polyclonal Antibody

**Applications**

WB,IF/ICC,ELISA

**Cross-Reactivity**

Human,Mouse

### Background

This gene is a member of the mitochondrial carrier family. The encoded protein is required during erythropoiesis and is important for the biosynthesis of heme. Mutations in this gene are the cause of autosomal congenital sideroblastic anemia (anemia, sideroblastic, 2, pyridoxine-refractory). A related pseudogene is found on chromosome 1.

### Recommended Dilutions

**WB** 1:500 - 1:2000

**IF/ICC** 1:50 - 1:200

### Immunogen Information

**Gene ID**

54977

**Swiss Prot**

Q96DW6

**Immunogen**

Recombinant fusion protein containing a sequence corresponding to amino acids 1-100 of human SLC25A38 (NP\_060345.2).

**Synonyms**

SIDBA2; SLC25A38

### Contact



[www.abclonal.com](http://www.abclonal.com)

### Product Information

**Source**

Rabbit

**Isotype**

IgG

**Purification**

Affinity purification

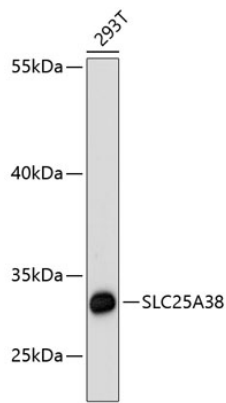
**Storage**

Store at -20°C. Avoid freeze / thaw cycles.

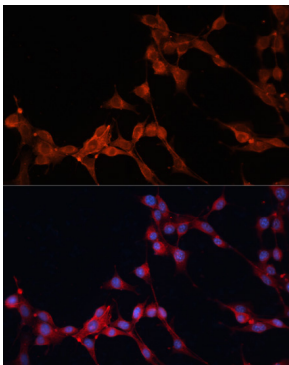
Buffer: PBS with 0.01% thimerosal,50% glycerol,pH7.3.

## Validation Data

---



Western blot analysis of extracts of 293T cells, using SLC25A38 antibody (A13218) at 1:3000 dilution.  
Secondary antibody: HRP Goat Anti-Rabbit IgG (H+L) (A5014) at 1:10000 dilution.  
Lysates/proteins: 25µg per lane.  
Blocking buffer: 3% nonfat dry milk in TBST.  
Detection: ECL Basic Kit (RM00020).  
Exposure time: 90s.



Immunofluorescence analysis of NIH/3T3 cells using SLC25A38 antibody (A13218) at dilution of 1:100. Blue: DAPI for nuclear staining.