

A13214

Leader in Biomolecular Solutions for Life Science



GPLOW Rabbit pAb

Catalog No.: A13214

Basic Information

Observed MW

52kDa

Calculated MW

52kDa

Category

Polyclonal Antibody

Applications

WB,ELISA

Cross-Reactivity

Human,Mouse,Rat

Background

This gene encodes a putative RNA-binding protein containing G-patch and KOW (Kyprides, Ouzounis, Woese) domains. The encoded protein interacts directly with protein kinase A and protein kinase X and is also found associated with the spliceosome.

Recommended Dilutions

WB 1:500 - 1:2000

Immunogen Information

Gene ID

27238

Swiss Prot

Q92917

Immunogen

Recombinant fusion protein containing a sequence corresponding to amino acids 127-476 of human GPLOW (NP_056513.2).

Synonyms

T54; Mos2; Spp2; GPATC5; GPATCH5; GPLOW

Contact



www.abclonal.com

Product Information

Source

Rabbit

Isotype

IgG

Purification

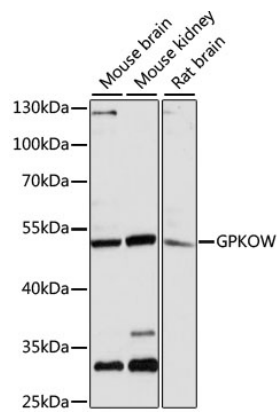
Affinity purification

Storage

Store at -20°C. Avoid freeze / thaw cycles.

Buffer: PBS with 0.01% thimerosal,50% glycerol,pH7.3.

Validation Data



Western blot analysis of various lysates using GPKOW Rabbit pAb (A13214) at 1:3000 dilution.
Secondary antibody: HRP Goat Anti-Rabbit IgG (H+L) (AS014) at 1:10000 dilution.
Lysates/proteins: 25µg per lane.
Blocking buffer: 3% nonfat dry milk in TBST.
Detection: ECL Enhanced Kit (RM00021).
Exposure time: 5s.