

A13210

Leader in Biomolecular Solutions for Life Science



## IFI44L Rabbit pAb

Catalog No.: A13210

### Basic Information

**Observed MW**

51kDa

**Calculated MW**

51kDa

**Category**

Polyclonal Antibody

**Applications**

WB, ELISA

**Cross-Reactivity**

Human, Mouse

### Background

Predicted to enable GTP binding activity. Involved in defense response to virus. Predicted to be located in cytoplasm.

### Recommended Dilutions

WB 1:500 - 1:2000

### Immunogen Information

**Gene ID**

10964

**Swiss Prot**

Q53G44

**Immunogen**

Recombinant fusion protein containing a sequence corresponding to amino acids 1-200 of human IFI44L (NP\_006811.2).

**Synonyms**

GS3686; TLDC5B; C1orf29; IFI44L

### Contact



[www.abclonal.com](http://www.abclonal.com)

### Product Information

**Source**

Rabbit

**Isotype**

IgG

**Purification**

Affinity purification

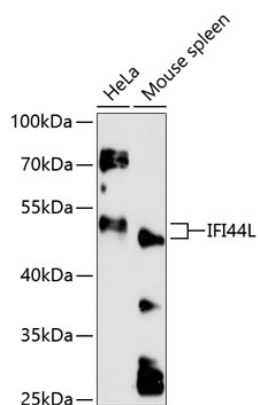
**Storage**

Store at -20°C. Avoid freeze / thaw cycles.

Buffer: PBS with 0.01% thimerosal, 50% glycerol, pH7.3.

## Validation Data

---



Western blot analysis of various lysates using IFI44L Rabbit pAb (A13210) at 1:3000 dilution.  
Secondary antibody: HRP Goat Anti-Rabbit IgG (H+L) (AS014) at 1:10000 dilution.  
Lysates/proteins: 25µg per lane.  
Blocking buffer: 3% nonfat dry milk in TBST.  
Detection: ECL Enhanced Kit (RM00021).  
Exposure time: 90s.