

A13190

Leader in Biomolecular Solutions for Life Science



## ZC3H7A Rabbit pAb

Catalog No.: A13190

### Basic Information

**Observed MW**

120kDa

**Calculated MW**

111kDa

**Category**

Polyclonal Antibody

**Applications**

WB,IF/ICC,ELISA

**Cross-Reactivity**

Human,Mouse,Rat

### Background

Enables miRNA binding activity. Involved in production of miRNAs involved in gene silencing by miRNA. Predicted to be located in nucleus.

### Recommended Dilutions

<b>WB</b>	1:500 - 1:2000
<b>IF/ICC</b>	1:50 - 1:200

### Immunogen Information

**Gene ID**

29066

**Swiss Prot**

Q8IWR0

**Immunogen**

Recombinant fusion protein containing a sequence corresponding to amino acids 1-220 of human ZC3H7A (NP\_054872.2).

**Synonyms**

ZC3H7; HSPC055; ZC3HDC7; ZC3H7A

### Contact



[www.abclonal.com](http://www.abclonal.com)

### Product Information

**Source**

Rabbit

**Isotype**

IgG

**Purification**

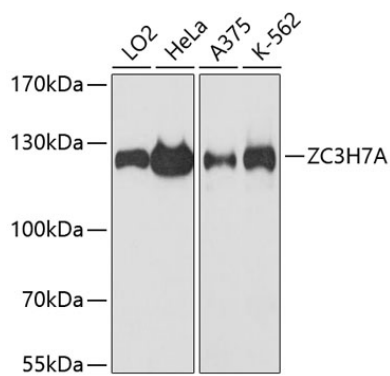
Affinity purification

**Storage**

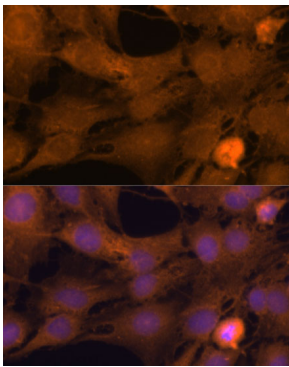
Store at -20°C. Avoid freeze / thaw cycles.

Buffer: PBS with 0.01% thimerosal,50% glycerol,pH7.3.

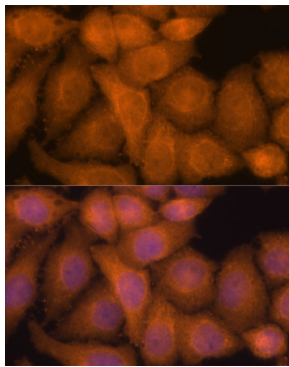
## Validation Data



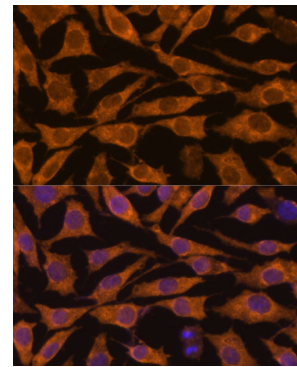
Western blot analysis of various lysates using ZC3H7A Rabbit pAb (A13190) at 1:3000 dilution. Secondary antibody: HRP Goat Anti-Rabbit IgG (H+L) (AS014) at 1:10000 dilution. Lysates/proteins: 25µg per lane. Blocking buffer: 3% nonfat dry milk in TBST. Detection: ECL Basic Kit (RM00020). Exposure time: 90s.



Immunofluorescence analysis of C6 cells using ZC3H7A Rabbit pAb (A13190) at dilution of 1:100. Secondary antibody: Cy3 Goat Anti-Rabbit IgG (H+L) (AS007) at 1:500 dilution. Blue: DAPI for nuclear staining.



Immunofluorescence analysis of HeLa cells using ZC3H7A Rabbit pAb (A13190) at dilution of 1:100. Secondary antibody: Cy3 Goat Anti-Rabbit IgG (H+L) (AS007) at 1:500 dilution. Blue: DAPI for nuclear staining.



Immunofluorescence analysis of L929 cells using ZC3H7A Rabbit pAb (A13190) at dilution of 1:100. Secondary antibody: Cy3 Goat Anti-Rabbit IgG (H+L) (AS007) at 1:500 dilution. Blue: DAPI for nuclear staining.