

A13174

Leader in Biomolecular Solutions for Life Science



## DGCR14 Rabbit pAb

Catalog No.: A13174

### Basic Information

**Observed MW**

53kDa

**Calculated MW**

53kDa

**Category**

Polyclonal Antibody

**Applications**

WB, ELISA

**Cross-Reactivity**

Human, Mouse

### Background

This gene is located within the minimal DGS critical region (MDGCR) thought to contain the gene(s) responsible for a group of developmental disorders. These disorders include DiGeorge syndrome, velocardiofacial syndrome, conotruncal anomaly face syndrome, and some familial or sporadic conotruncal cardiac defects which have been associated with microdeletion of 22q11.2. The encoded protein may be a component of C complex spliceosomes, and the orthologous protein in the mouse localizes to the nucleus. Alternatively spliced transcript variants have been found for this gene.

### Recommended Dilutions

WB 1:500 - 1:2000

### Immunogen Information

**Gene ID**

8220

**Swiss Prot**

Q96DF8

**Immunogen**

Recombinant fusion protein containing a sequence corresponding to amino acids 1-300 of human DGCR14 (NP\_073210.1).

**Synonyms**

ES2; DGSH; DGS1; bis1; DGS-H; DGS-I; ESS-2; Es2el; DGCR13; DGCR14

### Contact



[www.abclonal.com](http://www.abclonal.com)

### Product Information

**Source**

Rabbit

**Isotype**

IgG

**Purification**

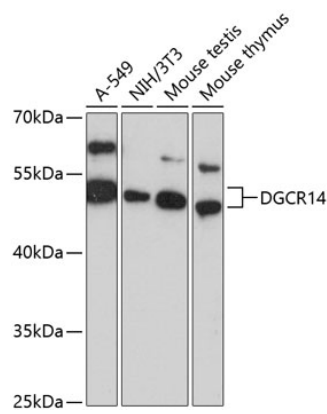
Affinity purification

**Storage**

Store at -20°C. Avoid freeze / thaw cycles.

Buffer: PBS with 0.01% thimerosal, 50% glycerol, pH 7.3.

Validation Data



Western blot analysis of various lysates using DGCR14 Rabbit pAb (A13174) at 1:3000 dilution.  
Secondary antibody: HRP Goat Anti-Rabbit IgG (H+L) (AS014) at 1:10000 dilution.  
Lysates/proteins: 25µg per lane.  
Blocking buffer: 3% nonfat dry milk in TBST.  
Detection: ECL Basic Kit (RM00020).  
Exposure time: 5s.