

A13139

Leader in Biomolecular Solutions for Life Science



CHCHD4 Rabbit pAb

Catalog No.: A13139

Basic Information

Observed MW

16kDa

Calculated MW

16kDa

Category

Mouse Monoclonal Antibody

Applications

WB,IHC-P,ELISA

Cross-Reactivity

Human,Mouse,Rat

Background

CHCHD4, a component of human mitochondria, belongs to a protein family whose members share 6 highly conserved cysteine residues constituting a -CXC-CX(9)C-CX(9)C- motif in the C terminus (Hofmann et al., 2005 [PubMed 16185709]).

Recommended Dilutions

WB	1:500 - 1:2000
IHC-P	1:100 - 1:200

Immunogen Information

Gene ID

131474

Swiss Prot

Q8N4Q1

Immunogen

Recombinant fusion protein containing a sequence corresponding to amino acids 1-142 of human CHCHD4 (NP_001091972.1).

Synonyms

MIA40; TIMM40; CHCHD4

Contact



www.abclonal.com

Product Information

Source

Rabbit

Isotype

IgG

Purification

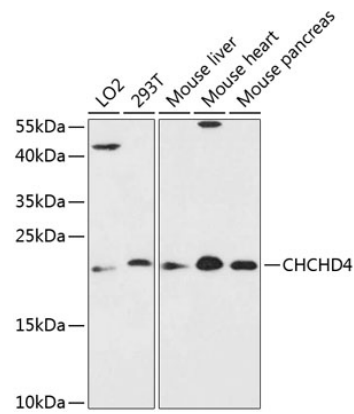
Affinity purification

Storage

Store at -20°C. Avoid freeze / thaw cycles.

Buffer: PBS with 0.01% thimerosal,50% glycerol,pH7.3.

Validation Data



Western blot analysis of various lysates using CHCHD4 Rabbit pAb (A13139) at 1:3000 dilution.
Secondary antibody: HRP Goat Anti-Rabbit IgG (H+L) (AS014) at 1:10000 dilution.
Lysates/proteins: 25µg per lane.
Blocking buffer: 3% nonfat dry milk in TBST.
Detection: ECL Enhanced Kit (RM00021).
Exposure time: 90s.