

A13131

Leader in Biomolecular Solutions for Life Science



LOXL4 Rabbit pAb

Catalog No.: A13131

Basic Information

Observed MW

84kDa

Calculated MW

84kDa

Category

Polyclonal Antibody

Applications

WB, ELISA

Cross-Reactivity

Human

Background

This gene encodes a member of the lysyl oxidase gene family. The prototypic member of the family is essential to the biogenesis of connective tissue, encoding an extracellular copper-dependent amine oxidase that catalyses the first step in the formation of crosslinks in collagens and elastin. A highly conserved amino acid sequence at the C-terminus end appears to be sufficient for amine oxidase activity, suggesting that each family member may retain this function. The N-terminus is poorly conserved and may impart additional roles in developmental regulation, senescence, tumor suppression, cell growth control, and chemotaxis to each member of the family.

Recommended Dilutions

WB 1:500 - 1:2000

Immunogen Information

Gene ID

84171

Swiss Prot

Q96JB6

Immunogen

Recombinant fusion protein containing a sequence corresponding to amino acids 25-280 of human LOXL4 (NP_115587.6).

Synonyms

LOXC; LOXL4

Contact



www.abclonal.com

Product Information

Source

Rabbit

Isotype

IgG

Purification

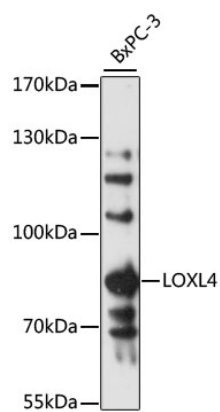
Affinity purification

Storage

Store at -20°C. Avoid freeze / thaw cycles.

Buffer: PBS with 0.01% thimerosal, 50% glycerol, pH 7.3.

Validation Data



Western blot analysis of lysates from BxPC-3 cells, using LOXL4 Rabbit pAb (A13131) at 1:3000 dilution.
Secondary antibody: HRP Goat Anti-Rabbit IgG (H+L) (AS014) at 1:10000 dilution.
Lysates/proteins: 25µg per lane.
Blocking buffer: 3% nonfat dry milk in TBST.
Detection: ECL Basic Kit (RM00020).
Exposure time: 30s.