

A13116

Leader in Biomolecular Solutions for Life Science



CWC22 Rabbit pAb

Catalog No.: A13116

Basic Information

Observed MW

110kDa

Calculated MW

105kDa

Category

Polyclonal Antibody

Applications

WB, ELISA

Cross-Reactivity

Mouse

Background

Enables RNA binding activity. Involved in mRNA splicing, via spliceosome. Located in cytosol and nuclear speck. Part of U2-type catalytic step 1 spliceosome; U2-type catalytic step 2 spliceosome; and U2-type precatalytic spliceosome.

Recommended Dilutions

WB 1:1000 - 1:2000

Immunogen Information

Gene ID

57703

Swiss Prot

Q9HCG8

Immunogen

Recombinant fusion protein containing a sequence corresponding to amino acids 639-908 of human CWC22 (NP_065994.1).

Synonyms

NCM; fSAPb; EIF4GL; CWC22

Contact



www.abclonal.com

Product Information

Source

Rabbit

Isotype

IgG

Purification

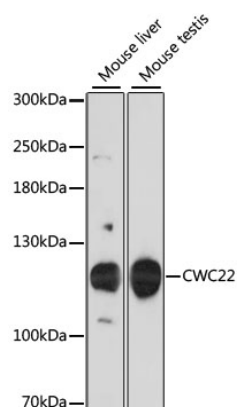
Affinity purification

Storage

Store at -20°C. Avoid freeze / thaw cycles.

Buffer: PBS with 0.01% thimerosal, 50% glycerol, pH7.3.

Validation Data



Western blot analysis of various lysates using CWC22 Rabbit pAb (A13116) at 1:3000 dilution.
Secondary antibody: HRP Goat Anti-Rabbit IgG (H+L) (AS014) at 1:10000 dilution.
Lysates/proteins: 25µg per lane.
Blocking buffer: 3% nonfat dry milk in TBST.
Detection: ECL Basic Kit (RM00020).
Exposure time: 30s.