

A13080

Leader in Biomolecular Solutions for Life Science



## NUP160 Rabbit pAb

Catalog No.: A13080

1 Publications

### Basic Information

#### Observed MW

150kDa

#### Calculated MW

162kDa

#### Category

Polyclonal Antibody

#### Applications

WB, ELISA

#### Cross-Reactivity

Human

### Background

A structural constituent of nuclear pore. Involved in mRNA export from nucleus and nephron development. Part of nuclear pore outer ring. Colocalizes with kinetochore. Implicated in nephrotic syndrome type 19.

### Recommended Dilutions

WB 1:500 - 1:2000

### Immunogen Information

#### Gene ID

23279

#### Swiss Prot

Q12769

#### Immunogen

Recombinant fusion protein containing a sequence corresponding to amino acids 40-150 of human NUP160 (NP\_056046.1).

#### Synonyms

NPHS19; NUP160

### Contact



[www.abclonal.com](http://www.abclonal.com)

### Product Information

#### Source

Rabbit

#### Isotype

IgG

#### Purification

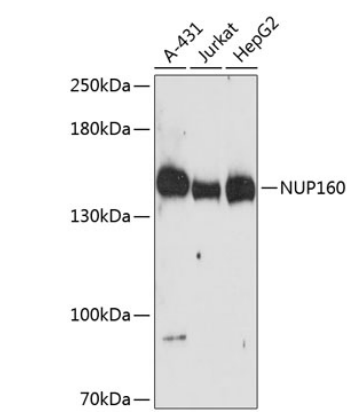
Affinity purification

#### Storage

Store at -20°C. Avoid freeze / thaw cycles.

Buffer: PBS with 0.01% thimerosal, 50% glycerol, pH 7.3.

# Validation Data



Western blot analysis of various lysates using NUP160 Rabbit pAb (A13080) at 1:3000 dilution. Secondary antibody: HRP Goat Anti-Rabbit IgG (H+L) (A5014) at 1:10000 dilution. Lysates/proteins: 25µg per lane. Blocking buffer: 3% nonfat dry milk in TBST. Detection: ECL Enhanced Kit (RM00021). Exposure time: 180s.