

A13075

Leader in Biomolecular Solutions for Life Science



## [KO Validated] GCN1L1 Rabbit pAb

Catalog No.: A13075 **KO** Validated

### Basic Information

#### Observed MW

293kDa

#### Calculated MW

293kDa

#### Category

Mouse Monoclonal Antibody

#### Applications

WB, ELISA

#### Cross-Reactivity

Human

### Background

Enables RNA binding activity and cadherin binding activity. Predicted to be involved in cellular response to leucine starvation and positive regulation of transcription from RNA polymerase II promoter in response to stress. Located in cytosol.

### Recommended Dilutions

WB 1:1000 - 1:5000

### Immunogen Information

#### Gene ID

10985

#### Swiss Prot

Q92616

#### Immunogen

Recombinant fusion protein containing a sequence corresponding to amino acids 2462-2671 of human GCN1L1 (NP\_006827.1).

#### Synonyms

GCN1L; GCN1L1; PRIC295; L1

### Contact



[www.abclonal.com](http://www.abclonal.com)

### Product Information

#### Source

Rabbit

#### Isotype

IgG

#### Purification

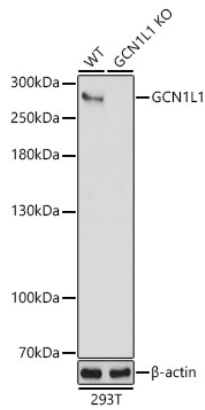
Affinity purification

#### Storage

Store at -20°C. Avoid freeze / thaw cycles.

Buffer: PBS with 0.01% thimerosal, 50% glycerol, pH 7.3.

## Validation Data



Western blot analysis of lysates from wild type(WT) and GCN1L1 knockout (KO) 293T(KO) cells, using [KO Validated] GCN1L1 Rabbit pAb (A13075) at 1:3000 dilution.  
Secondary antibody: HRP Goat Anti-Rabbit IgG (H+L) (AS014) at 1:10000 dilution.  
Lysates/proteins: 25µg per lane.  
Blocking buffer: 3% nonfat dry milk in TBST.  
Detection: ECL Basic Kit (RM00020).  
Exposure time: 30s.