

CHST1 Rabbit pAb

Catalog No.: A13057

Basic Information

Observed MW

47kDa

Calculated MW

47kDa

Category

Primary antibody

Applications

ELISA, WB

Cross-Reactivity

Mouse, Rat

Background

This locus encodes a member of the keratin sulfotransferase family of proteins. The encoded enzyme catalyzes the sulfation of the proteoglycan keratin.

Recommended Dilutions

WB 1:500 - 1:1000

Immunogen Information

Gene ID

8534

Swiss Prot

O43916

Immunogen

Recombinant fusion protein containing a sequence corresponding to amino acids 62-411 of human CHST1 (NP_003645.1).

Synonyms

C6ST; KSST; GST-1; KS6ST; KSGal6ST; CHST1

Contact

 | www.abclonal.com

Product Information

Source

Rabbit

Isotype

IgG

Purification

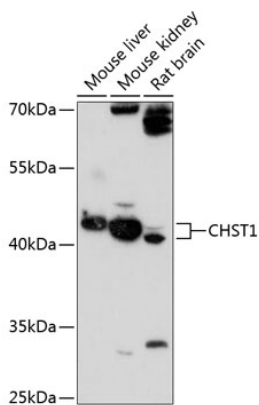
Affinity purification

Storage

Store at -20°C. Avoid freeze / thaw cycles.

Buffer: PBS with 0.01% thimerosal, 50% glycerol, pH 7.3.

Validation Data



Western blot analysis of extracts of various cell lines, using CHST1 antibody (A13057) at 1:1000 dilution.
Secondary antibody: HRP Goat Anti-Rabbit IgG (H+L) (A5014) at 1:10000 dilution.
Lysates/proteins: 25µg per lane.
Blocking buffer: 3% nonfat dry milk in TBST.
Detection: ECL Enhanced Kit (RM00021).
Exposure time: 90s.