

A13036

Leader in Biomolecular Solutions for Life Science



OVGP1 Rabbit pAb

Catalog No.: A13036

Basic Information

Observed MW

75kDa

Calculated MW

75kDa

Category

Mouse Monoclonal Antibody

Applications

WB, ELISA

Cross-Reactivity

Human, Mouse, Rat

Background

This gene encodes a large, carbohydrate-rich, epithelial glycoprotein with numerous O-glycosylation sites located within threonine, serine, and proline-rich tandem repeats. The gene is similar to members of the mucin and the glycosyl hydrolase 18 gene families. Regulation of expression may be estrogen-dependent. Gene expression and protein secretion occur during late follicular development through early cleavage-stage embryonic development. The protein is secreted from non-ciliated oviductal epithelial cells and associates with ovulated oocytes, blastomeres, and spermatozoan acrosomal regions.

Recommended Dilutions

WB 1:500 - 1:2000

Immunogen Information

Gene ID

5016

Swiss Prot

Q12889

Immunogen

Recombinant fusion protein containing a sequence corresponding to amino acids 22-260 of human OVGP1 (NP_002548.3).

Synonyms

EGP; OGP; MUC9; CHIT5; OVGP1

Contact



www.abclonal.com

Product Information

Source

Rabbit

Isotype

IgG

Purification

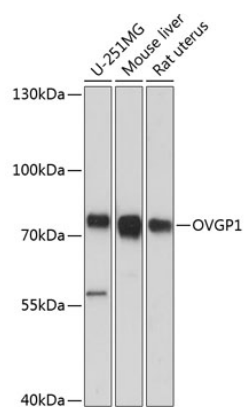
Affinity purification

Storage

Store at -20°C. Avoid freeze / thaw cycles.

Buffer: PBS with 0.01% thimerosal, 50% glycerol, pH 7.3.

Validation Data



Western blot analysis of various lysates using OVGP1 Rabbit pAb (A13036) at 1:3000 dilution.
Secondary antibody: HRP Goat Anti-Rabbit IgG (H+L) (AS014) at 1:10000 dilution.
Lysates/proteins: 25µg per lane.
Blocking buffer: 3% nonfat dry milk in TBST.
Detection: ECL Basic Kit (RM00020).
Exposure time: 15s.