

A13030

Leader in Biomolecular Solutions for Life Science



MTNR1A Rabbit pAb

Catalog No.: A13030

5 Publications

Basic Information

Observed MW

39kDa

Calculated MW

39kDa

Category

Polyclonal Antibody

Applications

WB, IHC-P, ELISA

Cross-Reactivity

Human, Mouse, Rat

Background

This gene encodes one of two high affinity forms of a receptor for melatonin, the primary hormone secreted by the pineal gland. This receptor is a G-protein coupled, 7-transmembrane receptor that is responsible for melatonin effects on mammalian circadian rhythm and reproductive alterations affected by day length. The receptor is an integral membrane protein that is readily detectable and localized to two specific regions of the brain. The hypothalamic suprachiasmatic nucleus appears to be involved in circadian rhythm while the hypophyseal pars tuberalis may be responsible for the reproductive effects of melatonin.

Recommended Dilutions

WB 1:1000 - 1:5000

IHC-P 1:100 - 1:200

Immunogen Information

Gene ID

4543

Swiss Prot

P48039

Immunogen

Recombinant fusion protein containing a sequence corresponding to amino acids 281-350 of human MTNR1A (NP_005949.1).

Synonyms

MT1; MEL-1A-R; MTNR1A

Contact



www.abclonal.com

Product Information

Source

Rabbit

Isotype

IgG

Purification

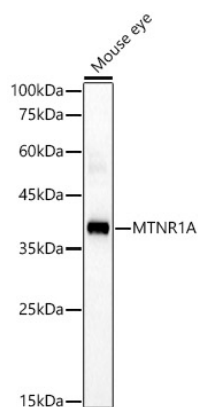
Affinity purification

Storage

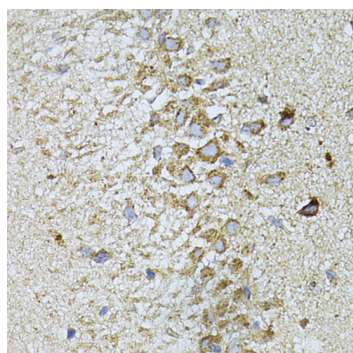
Store at -20°C. Avoid freeze / thaw cycles.

Buffer: PBS with 0.05% proclin300, 50% glycerol, pH7.3.

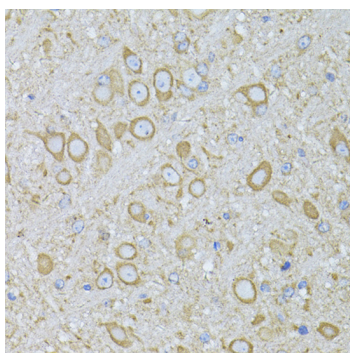
Validation Data



Western blot analysis of lysates from Mouse eye, using MTNR1A Rabbit pAb (A13030) at 1:2000 dilution.
Secondary antibody: HRP Goat Anti-Rabbit IgG (H+L) (AS014) at 1:10000 dilution.
Lysates/proteins: 25µg per lane.
Blocking buffer: 3% nonfat dry milk in TBST.
Detection: ECL Basic Kit (RM00020).
Exposure time: 60s.



Immunohistochemistry analysis of MTNR1A in paraffin-embedded Rat brain using MTNR1A Rabbit pAb (A13030) at dilution of 1:100 (40x lens). Perform microwave antigen retrieval with 10 mM PBS buffer pH 7.2 before commencing with IHC staining protocol.



Immunohistochemistry analysis of MTNR1A in paraffin-embedded Mouse brain using MTNR1A Rabbit pAb (A13030) at dilution of 1:100 (40x lens). Perform microwave antigen retrieval with 10 mM PBS buffer pH 7.2 before commencing with IHC staining protocol.