

A13019

Leader in Biomolecular Solutions for Life Science



## GPC1 Rabbit pAb

Catalog No.: A13019

### Basic Information

**Observed MW**

62kDa

**Calculated MW**

62kDa

**Category**

Polyclonal Antibody

**Applications**

WB, ELISA

**Cross-Reactivity**

Human, Mouse, Rat

### Background

Cell surface heparan sulfate proteoglycans are composed of a membrane-associated protein core substituted with a variable number of heparan sulfate chains. Members of the glypican-related integral membrane proteoglycan family (GRIPS) contain a core protein anchored to the cytoplasmic membrane via a glycosyl phosphatidylinositol linkage. These proteins may play a role in the control of cell division and growth regulation.

### Recommended Dilutions

WB 1:500 - 1:2000

### Immunogen Information

**Gene ID**

2817

**Swiss Prot**

P35052

**Immunogen**

Recombinant fusion protein containing a sequence corresponding to amino acids 290-420 of human GPC1 (NP\_002072.2).

**Synonyms**

glypican; GPC1

### Contact



[www.abclonal.com](http://www.abclonal.com)

### Product Information

**Source**

Rabbit

**Isotype**

IgG

**Purification**

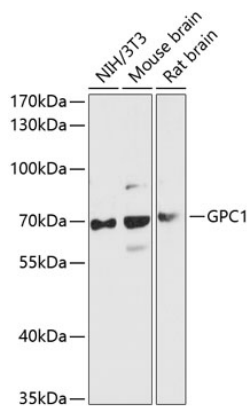
Affinity purification

**Storage**

Store at -20°C. Avoid freeze / thaw cycles.

Buffer: PBS with 0.01% thimerosal, 50% glycerol, pH 7.3.

Validation Data



Western blot analysis of various lysates using GPC1 Rabbit pAb (A13019) at 1:3000 dilution.  
Secondary antibody: HRP Goat Anti-Rabbit IgG (H+L) (A5014) at 1:10000 dilution.  
Lysates/proteins: 25µg per lane.  
Blocking buffer: 3% nonfat dry milk in TBST.  
Detection: ECL Basic Kit (RM00020).  
Exposure time: 60s.