

A13015

Leader in Biomolecular Solutions for Life Science



Neutrophil Elastase (ELANE) Rabbit pAb

Catalog No.: A13015

11 Publications

Basic Information

Observed MW

36kDa

Calculated MW

29kDa

Category

Polyclonal Antibody

Applications

WB, IHC-P, IF/ICC, ELISA

Cross-Reactivity

Human, Mouse, Rat

Background

Elastases form a subfamily of serine proteases that hydrolyze many proteins in addition to elastin. Humans have six elastase genes which encode structurally similar proteins. The encoded preproprotein is proteolytically processed to generate the active protease. Following activation, this protease hydrolyzes proteins within specialized neutrophil lysosomes, called azurophil granules, as well as proteins of the extracellular matrix. The enzyme may play a role in degenerative and inflammatory diseases through proteolysis of collagen-IV and elastin. This protein also degrades the outer membrane protein A (OmpA) of *E. coli* as well as the virulence factors of such bacteria as *Shigella*, *Salmonella* and *Yersinia*. Mutations in this gene are associated with cyclic neutropenia and severe congenital neutropenia (SCN). This gene is present in a gene cluster on chromosome 19.

Recommended Dilutions

WB	1:500 - 1:1000
IHC-P	1:50 - 1:200
IF/ICC	1:50 - 1:200

Immunogen Information

Gene ID

1991

Swiss Prot

P08246

Immunogen

A synthetic peptide corresponding to a sequence within amino acids 30-267 of human Neutrophil Elastase (ELANE) (NP_001963.1).

Synonyms

GE; NE; HLE; HNE; ELA2; SCN1; PMN-E; Neutrophil Elastase (ELANE)

Contact



www.abclonal.com

Product Information

Source

Rabbit

Isotype

IgG

Purification

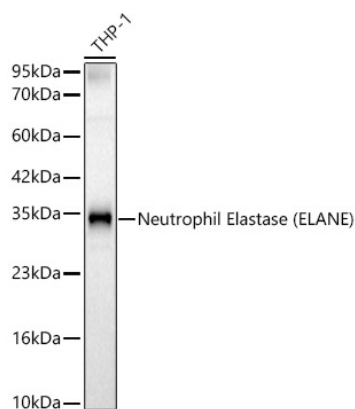
Affinity purification

Storage

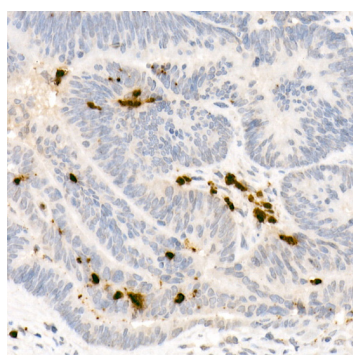
Store at -20°C. Avoid freeze / thaw cycles.

Buffer: PBS with 0.05% proclin300, 50% glycerol, pH7.3.

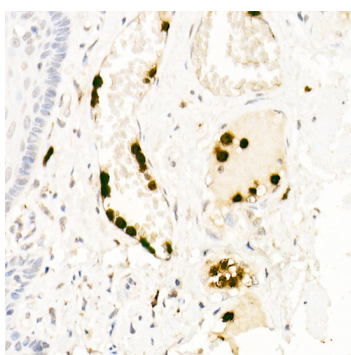
Validation Data



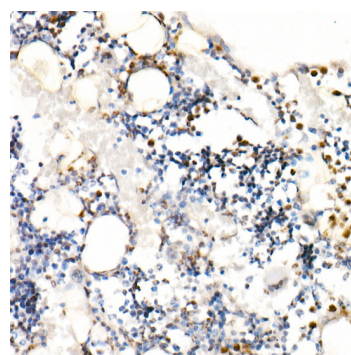
Western blot analysis of THP-1, using Neutrophil Elastase (ELANE) Rabbit pAb (A13015) at 1:2000 dilution.
 Secondary antibody: HRP Goat Anti-Rabbit IgG (H+L) (A5014) at 1:10000 dilution.
 Lysates/proteins: 25ug per lane.
 Blocking buffer: 3% nonfat dry milk in TBST.
 Detection: ECL Basic Kit (RM00020).
 Exposure time: 60s.



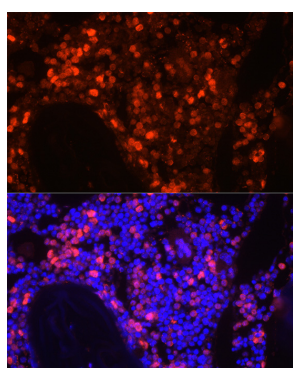
Immunohistochemistry analysis of paraffin-embedded human colon carcinoma using Neutrophil Elastase (ELANE) Rabbit pAb (A13015) at dilution of 1:20 (40x lens). Perform high pressure antigen retrieval with 10 mM citrate buffer pH 6.0 before commencing with IHC staining protocol.



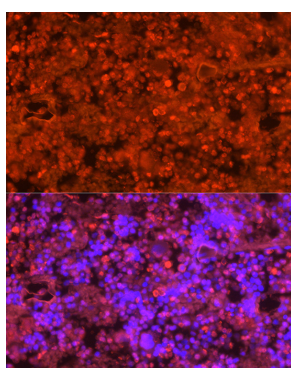
Immunohistochemistry analysis of paraffin-embedded human esophagus using Neutrophil Elastase (ELANE) Rabbit pAb (A13015) at dilution of 1:20 (40x lens). Perform high pressure antigen retrieval with 10 mM citrate buffer pH 6.0 before commencing with IHC staining protocol.



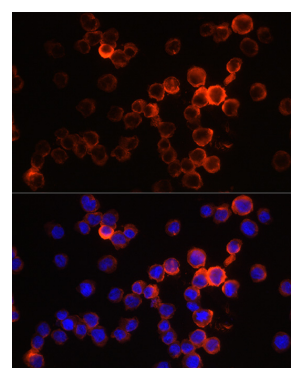
Immunohistochemistry analysis of paraffin-embedded rat bone marrow using Neutrophil Elastase (ELANE) Rabbit pAb (A13015) at dilution of 1:20 (40x lens). Perform high pressure antigen retrieval with 10 mM citrate buffer pH 6.0 before commencing with IHC staining protocol.



Immunofluorescence analysis of mouse bone marrow cells using Neutrophil Elastase (ELANE) Rabbit pAb (A13015) at dilution of 1:200 (40x lens). Blue: DAPI for nuclear staining.



Immunofluorescence analysis of rat bone marrow cells using Neutrophil Elastase (ELANE) Rabbit pAb (A13015) at dilution of 1:200 (40x lens). Blue: DAPI for nuclear staining.



Immunofluorescence analysis of THP-1 cells using Neutrophil Elastase (ELANE) Rabbit pAb (A13015) at dilution of 1:200 (40x lens). Blue: DAPI for nuclear staining.