

CASR Polyclonal Antibody

Catalog No.	A13000	Category	Polyclonal Antibodies
Applications	WB	Observed MW	155kDa
Cross-reactivity	Rat	Calculated MW	120kDa/121kDa

Immunogen Information

Immunogen	Recombinant fusion protein containing a sequence corresponding to amino acids 874-1088 of human CASR (NP_001171536.1).
Gene ID	846
Swiss prot	P41180
Synonyms	CASR; CAR; EIG8; FHH; FIH; GPRC2A; HHC; HHC1; HYPOC1; NSHPT; PCAR1; hCasR; calcium sensing receptor

Product information

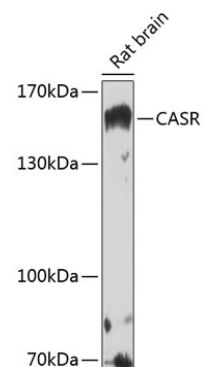
Source	Rabbit
Isotype	IgG
Purification method	Affinity purification
Storage	Store at -20°C. Avoid freeze / thaw cycles. Buffer: PBS with 0.02% sodium azide, 50% glycerol, pH 7.3.

Background

The protein encoded by this gene is a G protein-coupled receptor that is expressed in the parathyroid hormone (PTH)-producing chief cells of the parathyroid gland, and the cells lining the kidney tubule. It senses small changes in circulating calcium concentration and couples this information to intracellular signaling pathways that modify PTH secretion or renal cation handling, thus this protein plays an essential role in maintaining mineral ion homeostasis. Mutations in this gene cause familial hypocalciuric hypercalcemia, familial, isolated hypoparathyroidism, and neonatal severe primary hyperparathyroidism.

Recommended Dilutions

WB 1:500 - 1:2000



Western blot analysis of extracts of rat brain, using CASR antibody (A13000) at 1:1000 dilution. Secondary antibody: HRP Goat Anti-Rabbit IgG (H+L) (AS014) at 1:10000 dilution. Lysates/proteins: 25ug per lane. Blocking buffer: 3% nonfat dry milk in TBST. Detection: ECL Basic Kit (RM00020). Exposure time: 30s.