

A12954

Leader in Biomolecular Solutions for Life Science



SFXN1 Rabbit pAb

Catalog No.: A12954

Basic Information

Observed MW

36kDa

Calculated MW

36kDa

Category

Mouse Monoclonal Antibody

Applications

WB, ELISA

Cross-Reactivity

Human, Mouse, Rat

Background

Enables D-serine transmembrane transporter activity and L-serine transmembrane transporter activity. Involved in D-serine transport; L-serine transport; and serine import into mitochondrion. Located in mitochondrion. Is integral component of mitochondrial inner membrane.

Recommended Dilutions

WB 1:500 - 1:2000

Immunogen Information

Gene ID

94081

Swiss Prot

Q9H9B4

Immunogen

Recombinant fusion protein containing a sequence corresponding to amino acids 87-322 of human SFXN1 (NP_073591.2).

Synonyms

TCC; SLC56A1; SFXN1

Contact



www.abclonal.com

Product Information

Source

Rabbit

Isotype

IgG

Purification

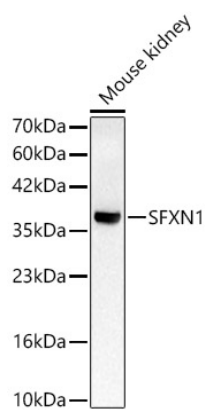
Affinity purification

Storage

Store at -20°C. Avoid freeze / thaw cycles.

Buffer: PBS with 0.01% thimerosal, 50% glycerol, pH 7.3.

Validation Data



Western blot analysis of Mouse kidney, using SFXN1 Rabbit pAb (A12954) at 1:1000 dilution.
Secondary antibody: HRP Goat Anti-Rabbit IgG (H+L) (AS014) at 1:10000 dilution.
Lysates/proteins: 25ug per lane.
Blocking buffer: 3% nonfat dry milk in TBST.
Detection: ECL Basic Kit (RM00020).
Exposure time: 5s.