

A12945

Leader in Biomolecular Solutions for Life Science



EHD2 Rabbit pAb

Catalog No.: A12945

Basic Information

Observed MW

61kDa

Calculated MW

61kDa

Category

Polyclonal Antibody

Applications

WB, ELISA

Cross-Reactivity

Human, Mouse, Rat

Background

This gene encodes a member of the EH domain-containing protein family. These proteins are characterized by a C-terminal EF-hand domain, a nucleotide-binding consensus site at the N terminus and a bipartite nuclear localization signal. The encoded protein interacts with the actin cytoskeleton through an N-terminal domain and also binds to an EH domain-binding protein through the C-terminal EH domain. This interaction appears to connect clathrin-dependent endocytosis to actin, suggesting that this gene product participates in the endocytic pathway.

Recommended Dilutions

WB 1:1000 - 1:3000

Immunogen Information

Gene ID

30846

Swiss Prot

Q9NZN4

Immunogen

Recombinant fusion protein containing a sequence corresponding to amino acids 244-543 of human EHD2 (NP_055416.2).

Synonyms

PAST2; EHD2

Contact



www.abclonal.com

Product Information

Source

Rabbit

Isotype

IgG

Purification

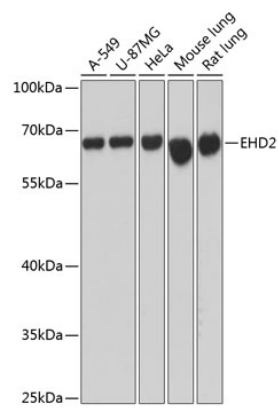
Affinity purification

Storage

Store at -20°C. Avoid freeze / thaw cycles.

Buffer: PBS with 0.01% thimerosal, 50% glycerol, pH 7.3.

Validation Data



Western blot analysis of various lysates using EHD2 Rabbit pAb (A12945) at 1:3000 dilution.
Secondary antibody: HRP Goat Anti-Rabbit IgG (H+L) (AS014) at 1:10000 dilution.
Lysates/proteins: 25µg per lane.
Blocking buffer: 3% nonfat dry milk in TBST.
Detection: ECL Basic Kit (RM00020).
Exposure time: 1s.