

A12941

Leader in Biomolecular Solutions for Life Science



## CDK7 Rabbit pAb

Catalog No.: A12941

### Basic Information

#### Observed MW

39kDa

#### Calculated MW

39kDa

#### Category

Polyclonal Antibody

#### Applications

WB,IF/ICC,ELISA

#### Cross-Reactivity

Human

### Background

The protein encoded by this gene is a member of the cyclin-dependent protein kinase (CDK) family. CDK family members are highly similar to the gene products of *Saccharomyces cerevisiae* cdc28, and *Schizosaccharomyces pombe* cdc2, and are known to be important regulators of cell cycle progression. This protein forms a trimeric complex with cyclin H and MAT1, which functions as a Cdk-activating kinase (CAK). It is an essential component of the transcription factor TFIIF, that is involved in transcription initiation and DNA repair. This protein is thought to serve as a direct link between the regulation of transcription and the cell cycle.

### Recommended Dilutions

WB 1:500 - 1:2000

IF/ICC 1:50 - 1:200

### Immunogen Information

#### Gene ID

1022

#### Swiss Prot

P50613

#### Immunogen

Recombinant fusion protein containing a sequence corresponding to amino acids 211-346 of human CDK7 (NP\_001790.1).

#### Synonyms

CAK; CAK1; HCAK; MO15; STK1; CDKN7; p39MO15; CDK7

### Contact



[www.abclonal.com](http://www.abclonal.com)

### Product Information

#### Source

Rabbit

#### Isotype

IgG

#### Purification

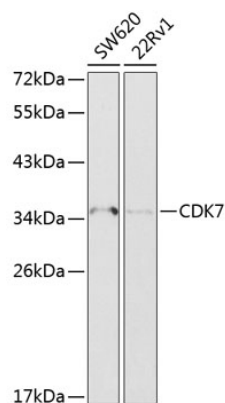
Affinity purification

#### Storage

Store at -20°C. Avoid freeze / thaw cycles.

Buffer: PBS with 0.02% sodium azide, 50% glycerol, pH7.3.

## Validation Data



Western blot analysis of extracts of various cell lines, using CDK7 antibody (A12941) at 1:1000 dilution.

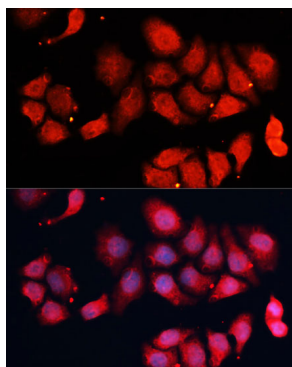
Secondary antibody: HRP Goat Anti-Rabbit IgG (H+L) (AS014) at 1:10000 dilution.

Lysates/proteins: 25µg per lane.

Blocking buffer: 3% nonfat dry milk in TBST.

Detection: ECL Basic Kit (RM00020).

Exposure time: 10min.



Immunofluorescence analysis of HeLa cells using CDK7 Polyclonal Antibody (A12941) at dilution of 1:100 (40x lens). Blue: DAPI for nuclear staining.