

A12912

Leader in Biomolecular Solutions for Life Science



## CLDN4 Rabbit pAb

Catalog No.: A12912

2 Publications

### Basic Information

#### Observed MW

18kDa

#### Calculated MW

22kDa

#### Category

Mouse Monoclonal Antibody

#### Applications

WB, IHC-P, ELISA

#### Cross-Reactivity

Human

### Background

The protein encoded by this intronless gene belongs to the claudin family. Claudins are integral membrane proteins that are components of the epithelial cell tight junctions, which regulate movement of solutes and ions through the paracellular space. This protein is a high-affinity receptor for Clostridium perfringens enterotoxin (CPE) and may play a role in internal organ development and function during pre- and postnatal life. This gene is deleted in Williams-Beuren syndrome, a neurodevelopmental disorder affecting multiple systems.

### Recommended Dilutions

WB 1:2000 - 1:4000

IHC-P 1:50 - 1:100

### Immunogen Information

#### Gene ID

1364

#### Swiss Prot

O14493

#### Immunogen

A synthetic peptide corresponding to a sequence within amino acids 109-209 of human CLDN4 (NP\_001296.1).

#### Synonyms

CPER; CPE-R; CPETR; CPETR1; WBSCR8; hCPE-R; CLDN4

### Contact



[www.abclonal.com](http://www.abclonal.com)

### Product Information

#### Source

Rabbit

#### Isotype

IgG

#### Purification

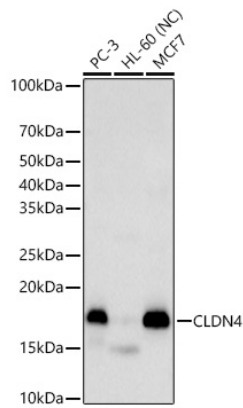
Affinity purification

#### Storage

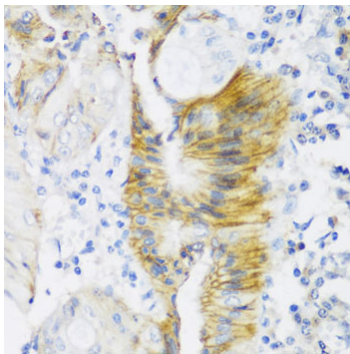
Store at -20°C. Avoid freeze / thaw cycles.

Buffer: PBS with 0.01% thimerosal, 50% glycerol, pH7.3.

## Validation Data



Western blot analysis of various lysates, using CLDN4 Rabbit pAb (A12912) at 1:4000 dilution.  
Secondary antibody: HRP Goat Anti-Rabbit IgG (H+L) (AS014) at 1:10000 dilution.  
Lysates/proteins: 25µg per lane.  
Blocking buffer: 3% nonfat dry milk in TBST.  
Detection: ECL Basic Kit (RM00020).  
Negative control (NC): HL-60  
Exposure time: 30s.



Immunohistochemistry analysis of paraffin-embedded human colon carcinoma using CLDN4 antibody (A12912) at dilution of 1:150 (40x lens). Perform microwave antigen retrieval with 10 mM PBS buffer pH 7.2 before commencing with IHC staining protocol.