

A12905

Leader in Biomolecular Solutions for Life Science



SMC1B Rabbit pAb

Catalog No.: A12905

Basic Information

Observed MW

144kDa

Calculated MW

144kDa

Category

Mouse Monoclonal Antibody

Applications

WB, ELISA

Cross-Reactivity

Rat

Background

SMC1L2 belongs to a family of proteins required for chromatid cohesion and DNA recombination during meiosis and mitosis (3:Revenkova et al., 2001 [PubMed 11564881]).

Recommended Dilutions

WB 1:500 - 1:1000

Immunogen Information

Gene ID

27127

Swiss Prot

Q8NDV3

Immunogen

Recombinant fusion protein containing a sequence corresponding to amino acids 1012-1161 of human SMC1B (NP_001278430.1).

Synonyms

SMC1L2; SMC1BETA; SMC1B

Contact



www.abclonal.com

Product Information

Source

Rabbit

Isotype

IgG

Purification

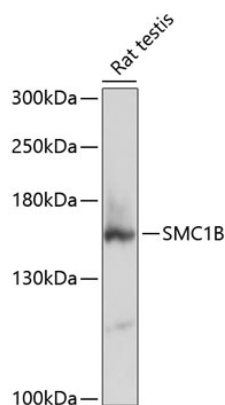
Affinity purification

Storage

Store at -20°C. Avoid freeze / thaw cycles.

Buffer: PBS with 0.01% thimerosal, 50% glycerol, pH 7.3.

Validation Data



Western blot analysis of lysates from rat testis, using SMC1B Rabbit pAb (A12905) at 1:3000 dilution.
Secondary antibody: HRP Goat Anti-Rabbit IgG (H+L) (A5014) at 1:10000 dilution.
Lysates/proteins: 25µg per lane.
Blocking buffer: 3% nonfat dry milk in TBST.
Detection: ECL Basic Kit (RM00020).
Exposure time: 30s.