

A12898

Leader in Biomolecular Solutions for Life Science



SDS Rabbit pAb

Catalog No.: A12898

1 Publications

Basic Information

Observed MW

35kDa

Calculated MW

35kDa

Category

Polyclonal Antibody

Applications

WB, ELISA

Cross-Reactivity

Mouse, Rat

Background

This gene encodes one of three enzymes that are involved in metabolizing serine and glycine. L-serine dehydratase converts L-serine to pyruvate and ammonia and requires pyridoxal phosphate as a cofactor. The encoded protein can also metabolize threonine to NH_4^+ and 2-ketobutyrate. The encoded protein is found predominantly in the liver.

Recommended Dilutions

WB 1:500 - 1:2000

Immunogen Information

Gene ID

10993

Swiss Prot

P20132

Immunogen

Recombinant fusion protein containing a sequence corresponding to amino acids 90-170 of human SDS (NP_006834.2).

Synonyms

SDH; SDS

Contact



www.abclonal.com

Product Information

Source

Rabbit

Isotype

IgG

Purification

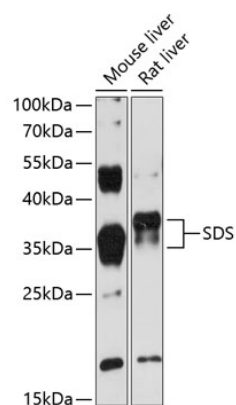
Affinity purification

Storage

Store at -20°C . Avoid freeze / thaw cycles.

Buffer: PBS with 0.01% thimerosal, 50% glycerol, pH 7.3.

Validation Data



Western blot analysis of various lysates using SDS Rabbit pAb (A12898) at 1:3000 dilution.
Secondary antibody: HRP Goat Anti-Rabbit IgG (H+L) (AS014) at 1:10000 dilution.
Lysates/proteins: 25µg per lane.
Blocking buffer: 3% nonfat dry milk in TBST.
Detection: ECL Enhanced Kit (RM00021).
Exposure time: 30s.